

STAGE 3 ARCHAEOLOGICAL ASSESSMENT OF BbGt-32, 309 ZEPHYR
ROAD, ZEPHYR ONTARIO, PART LOTS 24 and 25, CONCESSION 3,
GEOGRAPHIC TOWNSHIP OF SCOTT, TOWNSHIP OF UXBRIDGE,
REGIONAL MUNICIPALITY OF DURHAM, ONTARIO

Associated Borden: BbGt-32
Associated PIF: P025-0566-2017

Original Report

For:
EcoVue Consulting Services Ltd.

From:
Northeastern Archaeological Associates Ltd.
Licenced to Lawrence Jackson
PIF# P025-0594-2018

March 04, 2019

Northeastern Archaeological Associates Limited
P.O. Box 493,
Port Hope, Ontario
L1A 3Z4
905-342-325

EXECUTIVE SUMMARY

In the spring of 2018, Northeastern Archaeological Associates Limited was contacted by a private developer requesting that, in compliance with the requirements outlined by the MTCS, a Stage 3 Archaeological Assessment be conducted for the site BbGt-32, at a proposed subdivision development at 309 Zephyr Road, Zephyr. The Subject Property is in Part Lots 24 and 25, Concession 3, in the geographic Township of Scott, Township of Uxbridge, in the Regional Municipality of Durham, Ontario. The subject property is approximately 13 hectares, and sits on the south side of Zephyr Road. Stage 1 research indicated that the property is of high archaeological potential, as outlined by the *Ministry of Tourism, Culture and Sport*, due to its proximity to water sources, areas of historic development, historic transportation corridors, and its proximity to the relic strandline of Lake Algonquin. Stage 2 Assessment was undertaken by Northeastern Archaeological Associates Ltd. in the summer and autumn 2017 and registered the post-contact surface scatter Euro-Canadian site BbGt-32. This site was found to possess further cultural heritage value or interest and Stage 3 assessment was recommended.

Stage 3 assessment in the form of a controlled surface pickup (CSP) and the excavation of 42 1m² units between July 04 and July 18 of 2018. This assessment resulted in the recovery of 688 post-contact Euro-Canadian artifacts. Given the observed damage to site integrity, nature of the material, and lack of cultural features observed, this site was found to have no further cultural heritage value or interest (CHVI).

Given this result it is the recommendation of Northeastern Archaeological Associates Limited that no further archaeological work be required for the site BbGt-32 or the subject property at 309 Zephyr Road, Zephyr, Ontario.

Table of Contents

EXECUTIVE SUMMARY	i
1.0 PROJECT PERSONNEL	4
Table 1: Project Personnel and Breakdown of Relevant Duties	4
2.0 PROJECT CONTEXT	4
2.1 Development Context	4
2.2 Historical Context.....	5
2.3 Archaeological Context	7
Table 2: General Archaeological Timeline of Central Ontario	8
3.0 FIELD METHODS	9
4.0 RECORD OF FINDS	11
4.1 Field Documentation.....	15
5.0 ANALYSIS AND CONCLUSIONS	15
6.0 RECOMMENDATIONS	16
7.0 ADVICE ON COMPLIANCE WITH LEGISLATION	17
8.0 REFERENCES CITED.....	18
Section 9.0: Assessment Images	20
Image 9.1: Oriented SW, View of Site Area During CSP.....	20
Image 9.2: Oriented W, Excavation of Western Site Area in Process.....	20
Image 9.3: Oriented W, Excavation Unit and Progress in Southern Site Area.....	21
Image 9.4: Oriented SW, Excavation Progress in Southern Site Area.....	21
Image 9.5: Oriented N, Floor Troweling in Excavation Unit	22
Image 9.6: Oriented N, Plan View of Typical Unit with Mottled Sandy Subsoil Floor (N110W80).....	22
Image 9.7: Oriented N, Plan View of Typical Unit with Rocky Clay/Sand Subsoil Floor (N105W80)..	23
Image 9.8: Oriented N, Plan View with Golf Course Infrastructure (Irrigation Pipe) Disturbance (N105W75).....	23
Image 9.9: Representative White Bodied Ceramics from BbGt-32	24
Image 9.10: Representative Coarse Earthenware and Stoneware Ceramics from BbGt-32	25
Image 9.11: Representative Glass from BbGt-32.....	26
Image 9.12: Representative Fasteners and other Metal from BbGt-32	27
Image 9.13: Representative Fauna from BbGt-32	28
Image 9.14: Representative Buttons, Pipe, and Miscellaneous Personal Items from BbGt-32.....	29

Section 10.0: Mapping and Graphics	30
Map 10.1: Location of Subject Property	30
Map 10.2: Topographic Map of Study Area	31
Map 10.3: Severance Plan, Courtesy of Proponent	32
Map 10.4 Aerial View of Study Area	33
Map 10.5: Stage 3 Excavation Grid Illustration.....	34
Map 10.6: Section of George Tremaine’s 1860 Map of Scott Township	35
Map 10.7: Section of 1877 Historic Atlas Map of East Whitby	36
Map 10.8: Regional Physiography of the Subject Property Area.....	37
Appendix A: Stage 3 CSP and Excavation Unit Catalog for BbGt-32	38
Appendix B: Example Floor and Profile Plans for Stage 3 Units	61

1.0 PROJECT PERSONNEL

Project Director:	Dr. Lawrence Jackson (P025) -Report Preparation
Field Directors:	Tom Ballentine (P005) -July 05, 06, 09, 10, 11, 18 Justin Tighe (R421) -July 04, 12, 17 -Graphics, Report Preparation
Field Technicians:	Dave LaMarche Michael Obie Dan Smith Josh Garrett Julie Bazely

Table 1: Project Personnel and Breakdown of Relevant Duties

2.0 PROJECT CONTEXT

2.1 Development Context

The *Ontario Heritage Act*, R.S.O. 1990 c. O.18, requires anyone wishing to carry out archaeological fieldwork in Ontario to have a license from the Ministry of Tourism, Culture & Sport (MTCS). All licensees are to file a report with the MTCS containing details of the fieldwork that has been done for each project. Following standards and guidelines set out by the MTCS is a condition of a licence to conduct archaeological fieldwork in Ontario. *Northeastern Archaeological Associates Ltd.* confirms that this report meets ministry report requirements as set out in the *2011 Standards and Guidelines for Consultant Archaeologists*, and is filed in fulfillment of the terms and conditions an archaeological license.

In compliance with the requirements outlined by the Ontario Ministry of Tourism, Culture and Sport, and the Regional Municipality of Durham in accordance with the Ontario Planning Act, a pre-approval Stage 3 archaeological assessment of the site BbGt-32 in the property at 309 Zephyr Road, Zephyr, located in part of Lot 24 and 25, Concession 3 of the geographic Township of Scott was awarded to Northeastern Archaeological Associates Limited by EcoVue Consulting Services Ltd. in June of 2018. The study area is located in the southeast corner of the small community of Zephyr, accessible from Zephyr Road to the north (Map 10.1). The study area consists of approximately 13 hectares of golf course which is currently closed (see Maps 10.4, 10.5). The proposed development would consist of the creation of 15 subdivision lots (Map 10.2, 10.3). The property at the time of assessment was in a state of mixed use, with a closed golf course and occupied rental residence. Site BbGt-32 consists of a historic Euro-Canadian surface scatter and was discovered during Stage 2 Assessment in 2017. Permission to enter the property was granted by the proponent and property owners. Stage 3

assessment was undertaken on July 04 to July 18 of 2018. Any documentation generated in relation to this property is shown in this report.

2.2 Historical Context

Pre-contact Period

The Precontact period began with the arrival of nomadic peoples after the gradual retreat of the glaciers approximately 12,000 years ago (Karrow and Warner 1990).

Palaeo-Indian Period (12,000-10,000 BP) - The Palaeoindian period was characterized by people that lived in small family groups, using a highly distinctive stone tool technology (fluted and lanceolate points) to hunt large Late Pleistocene and other fauna associated with the cooler environments of the period (Ellis and Deller 1990; Jackson 1998). Small group mobility is believed to have ranged up to 200 km annually.

Archaic Period (10,000-3000 BP) - As the climate in southern Ontario warmed, indigenous populations adapted to these new environments. New technologies and subsistence strategies were introduced and developed. Woodworking implements such as groundstone axes, adzes and gouges began to appear, as did net-sinkers (for fishing), numerous types of spear points and items made from native copper, which was mined from the Lake Superior region. The presence of native copper on archaeological sites in southern Ontario and adjacent areas suggests that Archaic groups were involved in long distance exchange and interaction. The trade networks established at this time were to persist between indigenous groups until European contact. Archaic peoples became seasonal hunters and gatherers to exploit seasonably available resources in differing geographic areas. As the seasons changed, these bands split into smaller groups and moved inland to exploit other resources that were available during the fall and winter such as deer, rabbit, squirrel and bear, which thrived in the forested margins of these areas (Ellis et al. 1990).

Woodland Period (3000 BP to European contact) – This period saw the gradual establishment of important technological and subsistence changes, initially the appearance of clay pots (Jackson 1982; Spence et al. 1990) in the Early Woodland period among Algonkian speaking populations. Population increases also led to the establishment of larger camps and villages during the Middle Woodland. Elaborate burial rituals and the interment of numerous exotic grave goods with the deceased distinguish the Early and Middle Woodland. Increased trade and interaction between southern Ontario populations and groups as far away as the Atlantic coast and the Ohio Valley was taking place. During the late Middle Woodland, there were two major subsistence innovations, the harvesting of wild rice throughout south-central and northern Ontario and the introduction of maize agriculture which prelude the archaeological Late Woodland period. Algonkian speaking (Anishinabek) peoples relied heavily on wild rice and Iroquoian speaking peoples on maize (Jackson n.d). The Late Woodland is known for large sedentary villages in south-central and southwestern Ontario after about 1000 A.D.

and increasing development of trade and warfare just prior to European contact. Both Algonkian and Iroquoian speaking peoples occupied the landscape of southern Ontario during this period. Although it is widely assumed that Iroquoian speaking peoples were sedentary in southern Ontario, populations did shift regionally, for unknown and likely socio-political reasons, and locally due to soil depletion from maize horticulture requiring regular relocation of villages. Anishinabek peoples had extensive hunting and gathering territory ranges throughout southcentral Ontario even into the recent historic period. Appendix C represents a Michi Saagiig Historical/Background Statement prepared by the administration of Curve Lake First Nation.

Post-contact History

Scott Township in North Ontario County was first surveyed by S.S. Wilmot in 1807 in advance of Euro-Canadian settlement, which began in 1830 with Evan Jones, a Welsh immigrant (Beers 1877). At the time of initial survey the township comprised 49,168 acres, with an assessed value of \$1,245,839. The township was described as having excellent light soil with scattered swamps. Scott Township was originally surveyed as part of York Township, it was incorporated in 1850 and became part of Ontario County in 1852 when that County was formed. Scott Township was amalgamated with Uxbridge to form the newly expanded Township of Uxbridge during the creation of the Regional Municipality of Durham in 1974.

The village of Zephyr is situated in the north-west corner of historic Scott Township and Ontario County. It is situated approximately 4km east of the bordering township of East Gwillimbury and approximately 3.7km south of Georgina Township. The Township of Georgina to the north is part of York Township (now York Region). The village's first Post Office is recorded to have been founded in 1865.

Land Use Summary of Lot 24 and 25, Concession 3

The subject property is located in the west half of Lots 24 and 25, Concession 3, in the geographic Township of Scott, Ontario County as shown in Map 10.6 and 10.7 with the location of the study area shaded red.

As illustrated in Map 10.6 and 10.7 the subject property consists of an irregular portion of two larger parcels of farm property, which comprise the west halves of lots 24 and 25. George Tremaine's 1861 map of Scott Township attributes both of these properties to a Jas. Campbell; no structures are illustrated on either property at this time. No indication of the community of Zephyr is shown on this map.

The Illustrated Historic Atlas of the United Counties of Durham and Northumberland (Beers 1877) shows N.P. Phillips as the owner of the property, and illustrates two houses adjacent to the village of Zephyr in Lot 25, and a small severed parcel with a house in the south-west corner of Lot 24. None of these structures appear to be within the subject property boundaries, although the two houses in Lot 25 are immediately adjacent.

Zephyr Road (CR13) and CR39 both represent historic roadways in Scott Township, appearing at least as early as 1860.

There is no indication of historic activity on the subject property other than farming and use by adjacent residences prior to the creation of the Hidden Ridge Golf Course.

2.3 Archaeological Context

The subject property is located partially in the Peterborough Drumlin Field physiographic region and partially in the Simcoe Lowlands physiographic region of southern Ontario (Chapman and Putnam, 1973). The Peterborough Drumlin Field is a rolling till plain of approximately 1750 square miles (4 532.5 square kilometres) lying between the Oak Ridges Moraine and the shallow overburden on the Black River Limestone Plain. With the City of Peterborough as its geographic centre it includes about 3000 drumlins, as well as numerous drumlinoid hills and surface flutings of glacial drift cover. Trenton limestone underlies most of the area. Dominant area soils are Otonabee Loam and Bondhead Loam. Soils are generally stony due to uplifting of the calcareous lower horizon by ploughing (Chapman and Putnam, 1973). The Simcoe Lowlands represent a late phase lake bottom of Lake Algonquin which surrounds the modern Lake Simcoe. This area is characterized by low lying forest, large wetlands with peat deposits, and numerous waterways draining into Lake Simcoe. The undulating relic shoreline of Lake Algonquin forms the southern boundary of this region (Map 10.8)

The subject property sits on the slope of a drumlinized till plain, with moderately steep slopes descending eastwards towards a low-lying swampy forest. This low-lying area is a large embayment of the Simcoe Lowlands region and is designated as “peat and muck”. This forest is mapped as a significant wetland surrounding Zephyr Creek and is overseen by the Lake Simcoe Region Conservation Authority. Zephyr Creek drains to the north-west and joins the Black River before entering Lake Simcoe at the town of Sutton.

Locally the subject property is an irregular parcel of mixed open golf course with treelines and ponds, with small areas of lawn in the north-west corner. A single occupied home of modern construction occupies the property, along with a vacant clubhouse building of similar age. The property sits on the south side of Zephyr Road, removed by a long lane which is not part of the development property. The property is bordered on the north, west, and south by residential and farm properties and a large Environmentally Protected wetland to the east. Disturbances exist in the form of gravel driveway and parking areas, a house and clubhouse.

An archaeological survey of the proglacial Lake Algonquin strandline in the vicinity of the village of Udora to the north-east was carried out by a crew from the Royal Ontario Museum under the field direction of Lawrence Jackson in 1979. This resulted in the discovery of multiple Palaeo-Indian sites along the strandline to the north-east and south of Udora. Materials from a number of these early Palaeo-Indian sites were subsequently published by Peter Storck (1982).

A search of the archaeological sites data base of the Ontario Ministry of Tourism, Culture and Sport through the MTCS Pastport Sites module was undertaken but did not return any registered archaeological sites within 2km of the subject property.

The subject property is adjacent to multiple recorded 19th century farmhouses as illustrated in Map 10.6 and discussed in Section 2.2 of this report. These houses are not within the subject property boundaries.

Stage 1 assessment found the entire property to have high archaeological potential for First Nations sites based on the following identified features of archaeological potential:

- Proximity to water sources
- Area of historic development/settlement, and historic transportation routes
- Proximity to the Lake Algonquin relic shoreline

A general timeline of archaeological periods and associated cultural groups in Central Ontario is provided as Table 2 below.

Period	Group(s)	Date Range	Culture/Technology
Palaeo-Indian			
	Fluted Point	11000-10400 B.P.	Big Game Hunters
	Hi-Lo	10400-9500 B.P.	Small Nomadic Groups
Archaic			
Early	Side Notched Corner Notched Bifurcate Point	10000-9700 B.P. 9700-8900 B.P. 8900-8000 B.P.	Nomadic Hunters and Gatherers
Middle	Early Middle Archaic Laurentian	8000-5500 B.P. 5500-4000 B.P.	Transition to Territorial Settlements
Late	Narrow Point Broad Point Small Point Glacial Kame	4500-3000 B.P. 4000-3500 B.P. 3500-3000 B.P. ca. 3000 B.P.	Polished and Groundstone Tools, River/Lakeshore Settlement, Burial Ceremonialism
Woodland			
Early	Meadowood Middlesex	2900-2400 B.P. 2400-2000 B.P.	Introduction of Pottery Elaborate Burials
Middle	Point Peninsula Sandbanks/Princess Point	2300-1300 B.P. 1500-1200 B.P.	Long-Distance Trade Burial Mounds, Agriculture
Late	Pickering Middleport Huron/Iroquois	1100-700 B.P. 670-600 B.P. 600-350 B.P.	Transition to Fortified Villages, Horticulture, Large Village Sites Tribal Organization, Warfare
Historic			
Early	Mississauga	300-present	Southward Migration
Late	Euro-Canadian	225-present	European Settlement

Table 2: General Archaeological Timeline of Central Ontario

Stage 2 fieldwork undertaken in the summer and autumn of 2017 (P025-0566-2017) consisted of Pedestrian and Test-Pit survey as 5m transect intervals. This assessment resulted in the discovery of a scatter of pre-1900 Euro-Canadian material limited to one ploughed area. An analysis of the recovered material found it to meet the requirements for further archaeological assessment as per The Archaeology of Rural Historical Farmsteads technical bulletin (Section 6, MTCS 2014), and the 2011 Standards and Guidelines for Consultant Archaeologists with more than 20 artifacts dating the site to pre-1900 (Standard 1. c., Section 2.2, MTCS 2011). This site was registered with the Borden designation BbGt-32.

3.0 FIELD METHODS

GPS coordinates for reference points, Datum, CSP collection points, outer perimeter units and an approximate centre point unit for the assessment of BaGr-62 are provided in table form as part of the Supplementary Documentation Package. Also provided as part of the Supplementary Documentation are maps showing the excavation grid in relation to the subject property, and the location and orientation of all fieldwork photos.

Stage 3 assessment of BbGt-32 included an initial controlled surface pickup (CSP) of the open field/former fairway of the site as per Section 3.2.1 of the 2011 S&Gs (MTCS, 2011). The areas was re-ploughed and allowed to weather, then re-surveyed as per Standard 1 of Section 3.2.1 (MTCS, 2011), (Image 9.1). Sixteen surface collection points were located during CSP. These were marked, collected and recorded according to Standards 2-6, Section 3.2.1 (MTCS, 2011). The artifacts were recorded by using a handheld GPS unit; co-ordinates and an aerial map (Map 2) are provided in the Supplementary Documentation Package. These CSP points were also recorded in relation to the excavation unit grid, as shown in Map 10.2 and Map 2 of the Supplementary Documentation.

Following the CSP a Stage 3 Unit Excavation of the site BbGt-32 was undertaken as per Section 3.2.2 of the Standards and Guidelines. A datum to be left in place was placed on the south-west corner of the site, and two further datums were placed by transit on the south-east and north-east corners, creating two baselines along the southern and eastern perimeters of the site. Intersecting lines were placed every 5m across the site using a transit-and-tape method to create a 5mx5m grid. 1m² units were initially excavated near the site center, as observed during CSP, and then were placed outwards towards the perimeters. Unit placement and excavation limits were determined based on the presence of high-count excavation units and shape of the CSP/Stage 2 surface scatter. Several outer units had moderate artifact counts solely due to high artifact fragmentation.

Historic Euro-Canadian artifact types and concentrations at BbGt-32 were not found to be substantially different from other registered sites of this date range in south-central rural Ontario. Household goods such as ceramics, glass, pipes and butchered fauna, as well as moderate quantities of iron fasteners recovered during Stage 3 excavations are common on 19th - early 20th century household sites in south-central Ontario. Taking this into consideration along with an absence of subsoil features, excavations of additional units on the periphery of the site were ceased when artifact counts were repeatedly low and coverage of the Stage 2

area and recovery of an adequate artifact sample were achieved as per Guideline 1, Section 3.2.3 (MTCS, 2011).

Thirty-five initial 1m² units were excavated in a 5m grid as per Table 3.1, Section 3.2.3 (MTCS, 2011). Seven additional units were excavated in the area of the highest concentration of diagnostic artifacts for a total of 42 1m² Stage 3 excavation units (Map 10.7). All units were excavated by hand by 10cm layers into the first 5cm of subsoil. Images 9.3-9.5 show excavation in progress. No natural stratigraphy was observed beyond the transition from plough-zone to subsoil. Heavy disturbance was observed in the ploughzone layer throughout much of the site and infrastructure associated with the golf course resulted in several areas of disturbed subsoil (example Image 9.8). Plough zone was a brown loam with pockets of stony gravel; subsoil transition was marked by a shift from well mixed plough-zone topsoil to orange, tan or grey mineral clay subsoil at a depth ranging from approximately 25-55cm. All soil excavated was processed using 6mm mesh screens as per Standard 7, Section 3.2.2. Units were cleaned and recorded by photograph and drawing (Image 9.6-9.8, Appendix A), and examined for cultural features. No subsoil features were observed during Stage 3 unit excavations. All artifacts were cleaned and recorded by respective excavation unit as per Standard 8, Section 3.2.2, (Appendix A). All units were recorded with a GPS unit and mapped in relation to the transit and permanent datum as shown in Map 10.5, as well as Map 2 of the Supplementary Documentation. Artifact counts are also illustrated in Map 10.5.

Stage 3 Assessment was undertaken under clear and temperate conditions on July 04, 05, 06, 09, 10, 11, 12, 17 and 18 of 2018. The active field director on each day is listed in Table 1. All fieldwork was undertaken when lighting and warm weather conditions were suitable for fieldwork as shown in report images.

4.0 RECORD OF FINDS

Stage 3 assessment of the site BbGt-32 resulted in the recovery of discovery of a scatter of 19th century material in the south-west portion of the subject property. This material was primarily ceramic and glass with small amounts of metal and personal items. A total of 688 artifacts were collected during Stage 3 Controlled Surface Pickup (CSP) and unit excavation. A detailed catalog is provided as Appendix A. Representative artifacts are photographed in Images 9.9-9.14.

Ceramics

Ceramics recovered included 313 fragments and were the most numerous artifact class. These included refined white earthenware (144), Ironstone (74), coarse bodied earthenware (61), stoneware (24), porcelain (9), and unglazed terra-cotta (1). Vessel types appear to be common tableware and utilitarian vessels

Refined White Earthenware

Of the 145 fragments of refined white earthenware recovered, 89 bore no visible decoration. These included vessel rims, body fragments, base, and handle fragments from a variety of highly fragmented tablewares and tea wares.

Decoration included industrial slip with four examples of blue, red or black slip banded rims, a bowl rim with a blue checkered pattern, and a body fragment with blue slip of an indeterminate style. Hand-painted wares included seven examples with green, blue, purple and brown floral patterns, including one body fragment with a tea-leaf motif. Two of these examples also bore black slip banding. Sponge or stamped wares included three examples, one each of blue, purplish-blue, and brown. Four rim fragments of shell-edge decoration were recovered, all were blue painted with incised lines and no scalloping of the rim edges. Ten body fragments of indeterminate tableware vessels with flow blue patterns were recovered. Twenty fragments decorated by transfer printing were recovered. These included 13 blue transfer examples, of which 12 were recognizable as the blue willow pattern. One of these bore a black transfer maker's mark fragment which was too incomplete to recognize anything other than a portion of a crown and the letter "S". Four of the other transferware fragments were brown transfer (one of these molded). Also recovered was a single example of green transferware and a base fragment with a black transfer maker's mark (again unrecognizable other than a crown). The remaining three refined white earthenware artifacts were decorated with molded patterns.

Ironstone

Of the 73 Ironstone artifacts recovered 41 were undecorated fragments of bowls, dishes, plates, platters and cups. Nine of the fragments recovered bore a molded pattern recognizable as the wheat or "Ceres" pattern. Twelve of the fragments bore other impressed and molded patterns, one fragment with a gilt band, two fragments with painted annular banding, and four with coloured glaze.

Coarse Bodied Earthenware

Artifacts made from coarse bodied earthenware, a paste type usually used for utilitarian items such as crockery, totalled 61. These included 48 with a red body colour and 13 from a buff coloured paste. Decoration of these fragments was limited to glaze colour, with some bearing different interior and exterior glazes. Glaze colours were primarily earth tones, as well as oranges and reds.

Stoneware

Twenty-four fragments of stoneware were recovered. This highly vitrified earthenware was generally used for utilitarian containers made to contain liquid. Two of these bore impressed or molded decoration, while the rest bore only coloured glazes or clear glaze. One fragment was recognizable as an inkwell base.

Porcelain

Six fragments of porcelain were recovered, including three base fragments and three rim fragments. One rim was recognizable as being from a teacup, while the rest of the fragments were from unidentifiable table wares.

Terra-Cotta

One vessel body fragment of unglazed terra-cotta was recovered during Stage 3 excavations.

Glass

Glass recovered totaled 188 artifacts. These consisted mostly of bottle, jar, and other container fragments. Container glass recovered included varying shades of aqua (65), amber (7), cobalt blue (2), 22 dark olive green and one pale olive green, seven deep green and one pale green. Also recovered were six solarized fragments of glass tinted by manganese, and 63 colourless fragments.

Aqua

Of the 65 aqua container and bottle glass fragments, 13 were from bases. Several of these bore mold seams, and one bore a section scar consistent with early automated manufacturing. Ten fragments were from bottle and jar finishes, eight of which were a tooled finish. The remaining 42 fragments were from bottle and jar bodies, including neck and shoulder fragments. Many of these bore mold seams but no further diagnostic markings.

Amber

Seven amber glass fragments were recovered. Three were body fragments from undetermined glass vessels. Also recovered was a club-sauce style stopper, a

Cobalt Blue

A single blue bottle body fragment was recovered during Stage 3 assessment

Olive

Ten fragments of dark olive green bottle glass and a single fragment of pale olive green bottle glass were recovered. All eleven were undecorated body fragments.

Green

Six fragments of deep green bottle glass and a single fragment of pale green bottle glass were recovered. All seven were undecorated body fragments.

Solarized

A total of three solarized bottle body fragments were recovered.

Colourless

Forty-four fragments of colourless glass were recovered. These included 31 bottle and jar fragments, one melted glass fragment, , a heavy stemware base fragment, two oil lamp base fragments and 12 thin curved fragments, possibly from an oil lamp chimney(s). Jar and bottle fragments, included a Crown canning jar with a fragment of the word **IMPERIAL**, a pressed glass dish base and body fragment, and a fragment of flat bottle body with the remnants of a plate mould formed “-TT’S”.

Window

Four fragments of flat window pane glass were recovered during Stage 3 unit excavations.

Buttons

Eight clothing buttons were recovered. These included two “black” glass button which are actually extremely dark violet. One of these was a small two-hole button and the other was a large faceted coat button with a missing eyelet. Also recovered were two small milk glass buttons, and four porcelain buttons.

Pipes

A single white clay tobacco pipe fragment was recovered, representing an unmarked stem and heel spur portion.

Metal

A total of 119 metal artifacts were recovered during Stage 3, including a variety of iron and steel fasteners, tool fragments, scrap, and miscellaneous objects.

Fasteners

Eighty-eight of the metal artifacts recovered were fasteners. These included a single hand-wrought iron nail, 69 machine cut steel/iron nails, nine wire nails, six large bolts or pins/rivets, one screw, one washer, and a large spurred timber spike.

Cast Iron

Cast iron fragments included three pot fragments, one farm implement blade fragment, and four indeterminate fragments.

Sheet Metal

Eight fragments of sheet metal were recovered, none of which were identifiable.

Miscellaneous

Other metal objects recovered during Stage 3 assessment included two sections of steel chain link, two hinge fragments, two file fragments, two segments of wire, a lead ball with cut marks, a pewter bracket fragment, an iron bracket fragment, a section of brass harmonica reed plate, a steel/iron nail set, an indeterminate brass fragment, and a piece of iron slag.

Fauna

Forty-nine fragments of animal bone were recovered during Stage 3 assessment, belonging to mammalian, avian, and mollusc species.

Mammalian

Thirty-nine of the recovered bone artifacts were mammalian. Of these six were from cow (*Bos taurus*), 11 were pig (*Sus scrofa*), and 22 were too fragmentary to positively identify to species.

Avian

Six fragments of avian bone were recovered. These included two sections of chicken (*Gallus gallus domesticus*) tarsometatarsus, a fragment of turkey (*Meleagris gallopavo*) longbone, two indeterminate longbone fragments, and a small game-bird size pelvis.

Mollusca

Four fragments of bivalve shell were recovered during stage 3 assessment, the most probable identification would be a species of freshwater mussel, but these fragments were too small for an identification to be possible.

Building Materials

Recovered building materials included two small fragments of reddish-orange brick and a fragment of building mortar.

Miscellaneous and Personal Items

Other objects recovered included a fragment of a porcelain doll leg, a section of leather with holes, likely from a boot or shoe, six fragments of writing slate, and two fragments of slate writing stylus.

4.1 Field Documentation

Stage 3 fieldwork produced 65 fieldwork and field condition photos, one modified aerial photo/subject property map, one grid map, 42 unit recordings, and nine pages of field notes; all documents are on file at Northeastern Archaeological offices.

5.0 ANALYSIS AND CONCLUSIONS

Artifacts recovered during Stage 2 are consistent with an occupation period from the late 1800s. Recovered artifacts with diagnostic characteristics included:

- Shell-edge decoration simple repetitive impressed patterns on un-scalloped rims (ca.1849) (Miller, 2000).
- Slip decorated wares were commonly found on Ontario sites from 1835 to 1900, with a mean date of 1867.5 (Jouppien 1980);
- Transfer decorated ceramics. This technique for blue-coloured patterns was widely adopted in the early 19th-century, with other colours following by 1828 (Miller 2000). Transfer-printed ceramics were consistently produced in large numbers well into the 20th century. Recovered transfer printed ceramics included blue transfer decoration with an introduction ca.1802, and a median date of 1834 (Jouppien 1980);
- Ironstone was introduced in 1846, but reached popularity ca.1875 when it began to replace decorated refined white earthenwares as the most common household tableware (Kenyon 1991). Slip decorated wares were commonly found on Ontario sites from 1835 to 1900, with a mean date of 1867.5 (Jouppien 1980);
- Wheat or Ceres pattern as noted on examples of heavy refined white earthenware was a common moulded decoration type. The first known appearance of a raised wheat motif dates to 1848 by Minton and Company, while the extremely popular “Wheat” pattern was registered later by Elsmore and Forster of Tunstall in 1859 (Sussman 1985). This pattern went on to be produced in numerous variations well into the 20th century (Sussman 1985). Kenyon (1991) gives a mean date of 1862 for wheat pattern.
- Hand-painted ceramics have a longer history than transfer printing and were generally more expensive. The example recovered from BbGt-32 appears to be a later (post-1830) colour palette characterized by darker more vibrant colours and black stems (Miller 2000);
- Bottle finishes recovered included both applies finishes (1820-1890), and tooled finishes (ca.1880) (Jones and Sullivan 1989). As well as several later mold formed finishes.

- Glass manufactured by automated machine mold, circa 1905+, including valve/ejection marks and Owen's suction scars.
- Solarized, or amethyst, glass. Solarization of glass occurs when UV radiation from sunlight reacts with manganese dioxide in the glass to give the vessel a distinctive pink-amethyst tint. Miller and Pacey (1985) date the use of manganese as a decolourizing agent in glass making to circa 1880.
- One machine-cut nail was recovered from BbGt-32. This is a square-headed machine-cut iron nail, which became available circa 1835 and continued production until 1890, when wire nails gained popularity (Adams 2002).

The distribution of artifact classes recovered from BbGt-32 during Stage 3 Assessment are consistent with late 19th-century household refuse and support the initial identification of the site as a small to moderate size plough dispersed midden deposit, likely associated with one of the neighbouring late 19th Century homes. Artifacts are almost entirely common household items with a few personal items (buttons, doll limb) and an almost complete lack of building material other than discarded nail fragments.

6.0 RECOMMENDATIONS

Based on the Stage 3 assessment results it is the recommendation of Northeastern Archaeological Associates Ltd. that no further archaeological work be required for the site BbGt-32.

The date range of recovered artifacts covers the last quarter of the 1800s with a few earlier items and extends into the early 20th century. The excavation revealed that moderate disturbance has taken place in the area in and around the site in the form of ploughing, as well as landscaping and infrastructure associated with the golf course. No evidence of site stratigraphy, structural foundations, or features were observed. All of this is conclusive of significant damage to the integrity of the site, and BbGt-32 does not appear to possess any further Cultural Heritage Value or Interest under The Archaeology of Rural Historical Farmsteads technical bulletin (Section 6, MTCS 2014), or the 2011 Standards and Guidelines for Consultant Archaeologists (MTCS 2011).

7.0 ADVICE ON COMPLIANCE WITH LEGISLATION

- a. This report is submitted to the Minister of Tourism, Culture and Sport as a condition of licencing in accordance with Part VI of the *Ontario Heritage Act*, R.S.O. 1990, c 0.18. The report is reviewed to ensure that it complies with the standards and guidelines that are issued by the Minister, and that the archaeological fieldwork and report recommendations ensure the conservation, protection and preservation of the cultural heritage of Ontario. When all matters relating to archaeological sites within the project area of a development proposal have been addressed to the satisfaction of the Ministry of Tourism and Culture, a letter will be issued by the ministry stating that there are no further concerns with regard to alterations to archaeological sites by the proposed development.
- b. It is an offence under Sections 48 and 69 of the *Ontario Heritage Act* for any party other than a licenced archaeologist to make any alteration to a known archaeological site or to remove any artifact or other physical evidence of past human use or activity from the site, until such time as a licensed archaeologist has completed archaeological fieldwork on the site, submitted a report to the Minister stating that the site has no further cultural heritage value or interest, and the report has been filed in the Ontario Public Register of Archaeology Reports referred to in Section 65.1 of the *Ontario Heritage Act*.
- c. Should previously undocumented archaeological resources be discovered, they may be a new archaeological site and therefore subject to Section 48 (1) of the *Ontario Heritage Act*. The proponent or person discovering the archaeological resources must cease alteration of the site immediately and engage a licenced consultant archaeologist to carry out archaeological fieldwork, in compliance with Section 48 (1) of the *Ontario Heritage Act*.
- d. The *Cemeteries Act*, R.S.O. 1990 c. C.4 and the *Funeral, Burial and Cremation Services Act*, 2002, S.O. 2002, c.33 (when proclaimed in force) require that any person discovering human remains must notify the police or coroner and the Registrar of Cemeteries at the Ministry of Consumer Services.

Archaeological sites recommended for further archaeological fieldwork or protection remain subject to Section 48 (1) of the *Ontario Heritage Act* and may not be altered, or have artifacts removed from them, except by a person holding an archaeological licence.

8.0 REFERENCES CITED

Adams, William H.

- 2002 **Machine Cut Nails and Wire Nails: American Production and Use for Dating 19th-Century and Early-20th-Century Sites.** Historical Archaeology Vol. 36, No. 4 (2002), pp. 66-88.
- 2003 **Dating Historical Sites: The Importance of Understanding Time Lag in the Acquisition, Curation, Use, and Disposal of Artifacts.** Historical Archaeology Vol. 37, No. 2 (2003), pp. 38-64.

Armstrong, F.

- 1985 **Handbook of Upper Canadian Chronology.** Rev. Ed., Dundurn Press Ltd., Toronto.

Beers, J.H.

- 1877 **Illustrated Historical Atlas of Ontario County.** Beers, J.H. & Co., Toronto ON

Chapman, L.J. and D.F. Putnam

- 1973 **The Physiography of Southern Ontario.** University of Toronto Press, Toronto.

Horne, M.

- 2017 **Personal Communication via email.**

Jackson, L

- 1979 **Algonquin Survey Journal.** Field Director. Royal Ontario Museum, Toronto ON.

Jouppien, J. K.

- 1980 **The Application of South's Mean Ceramic Dating Formula to Ontario Historic Sites.** Arch Notes May/June 1980:24-29.

Kenyon, Ian

- 1991 **A History of Ceramic Tableware in Ontario: 1780- 1890.** Unpublished distributed paper at the "An Introduction to English Ceramics for Archaeologists Workshop", Sponsored by the Association of Professional Archaeologists, 20 April 1991, Toronto, ON.

Lindsey, B.

- 2016 **Society for Historical Archaeology, US Department of the Interior, Bureau of Land Management,** Bottle Dating website
[http://www.sha.org/bottle/finishes.htm#Machine-made bottles](http://www.sha.org/bottle/finishes.htm#Machine-made%20bottles)

MTCS

- 2011 **Standards and Guidelines for Consultant Archaeologists.** Queen's Printer for Ontario.

MNR

- 2014 **LIO and MNRF Topographic Mapping and Satellite Imagery.**
<http://www.giscoeapp.lrc.gov.on.ca/>, Queens Printer for Ontario.

Stork, P.

- 1982 **Palaeo-Indian Settlement Patterns Associated with the Strandline of Glacial Lake Algonquin in Southcentral Ontario.** Canadian Journal of Archaeology No.6 (1982), pp. 1-31. Canadian Archaeological Association.

Sussman, L.

- 1985 **The Wheat Pattern, An Illustrated Survey.** Studies in Archaeology, Architecture, and History. National Historic Parks and Sites Branch. Parks Canada. Hull, Quebec.

Section 9.0: Assessment Images

Image 9.1: Oriented SW, View of Site Area During CSP



Image 9.2: Oriented W, Excavation of Western Site Area in Process



Image 9.3: Oriented W, Excavation Unit and Progress in Southern Site Area



Image 9.4: Oriented SW, Excavation Progress in Southern Site Area



Image 9.5: Oriented N, Floor Troweling in Excavation Unit



Image 9.6: Oriented N, Plan View of Typical Unit with Mottled Sandy Subsoil Floor (N110W80)



Image 9.7: Oriented N, Plan View of Typical Unit with Rocky Clay/Sand Subsoil Floor (N105W80)



Image 9.8: Oriented N, Plan View with Golf Course Infrastructure (Irrigation Pipe) Disturbance (N105W75)



Image 9.9: Representative White Bodied Ceramics from BbGt-32



Image 9.10: Representative Course Earthenware and Stoneware Ceramics from BbGt-32



Image 9.11: Representative Glass from BbGt-32



Image 9.12: Representative Fasteners and other Metal from BbGt-32



Image 9.13: Representative Fauna from BbGt-32

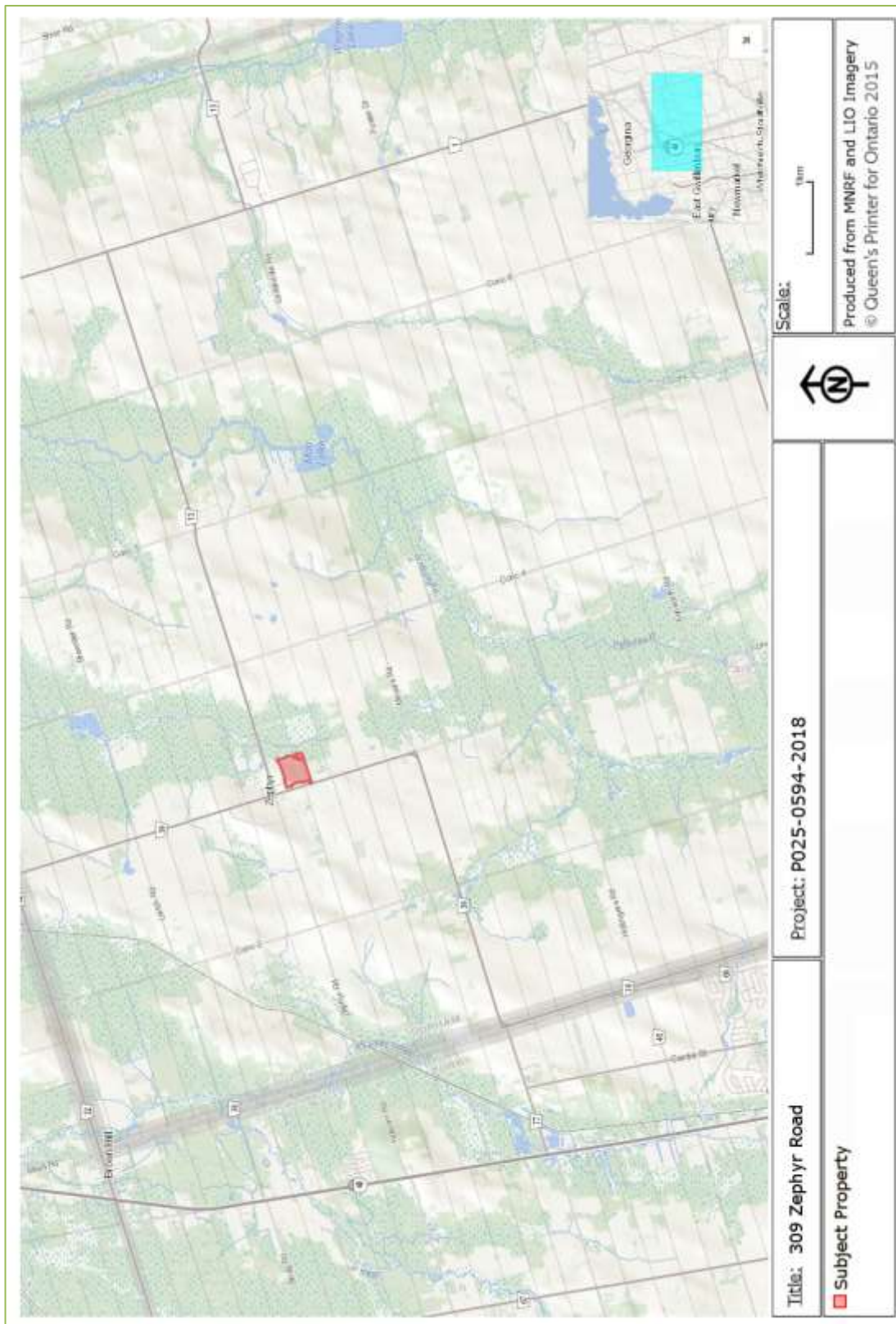


Image 9.14: Representative Buttons, Pipe, and Miscellaneous Personal Items from BbGt-32



Section 10.0: Mapping and Graphics

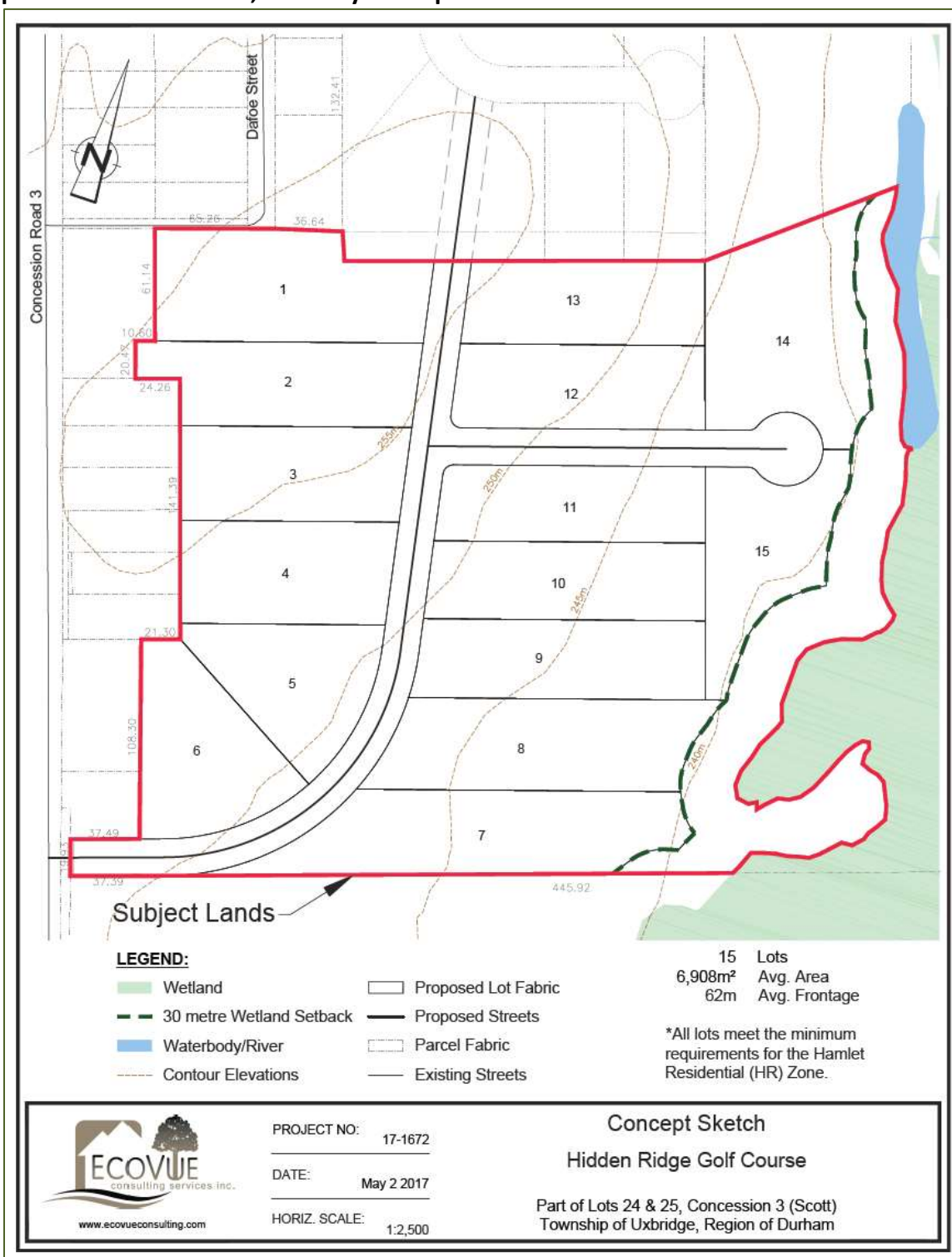
Map 10.1: Location of Subject Property



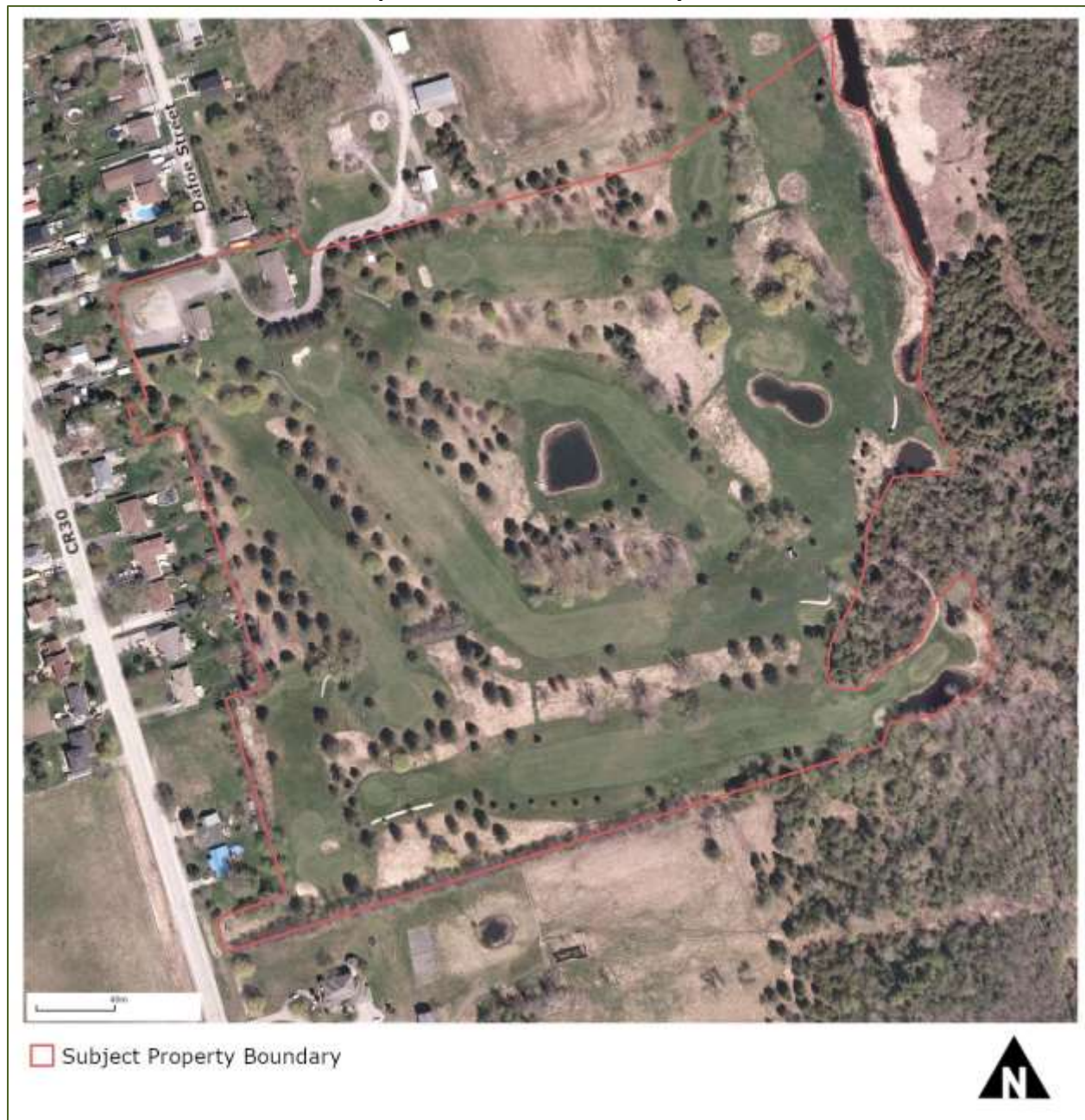
Map 10.2: Topographic Map of Study Area



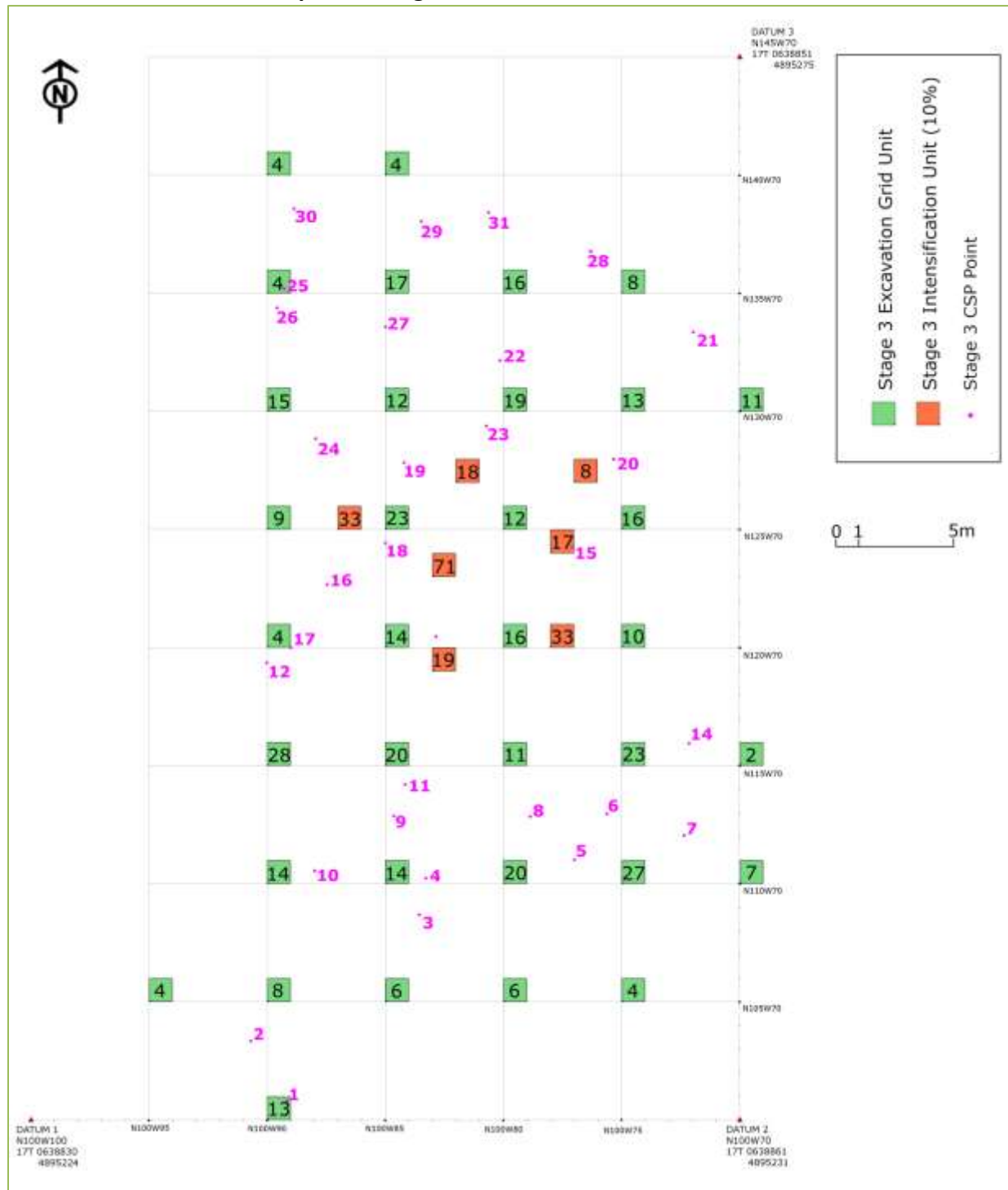
Map 10.3: Severance Plan, Courtesy of Proponent



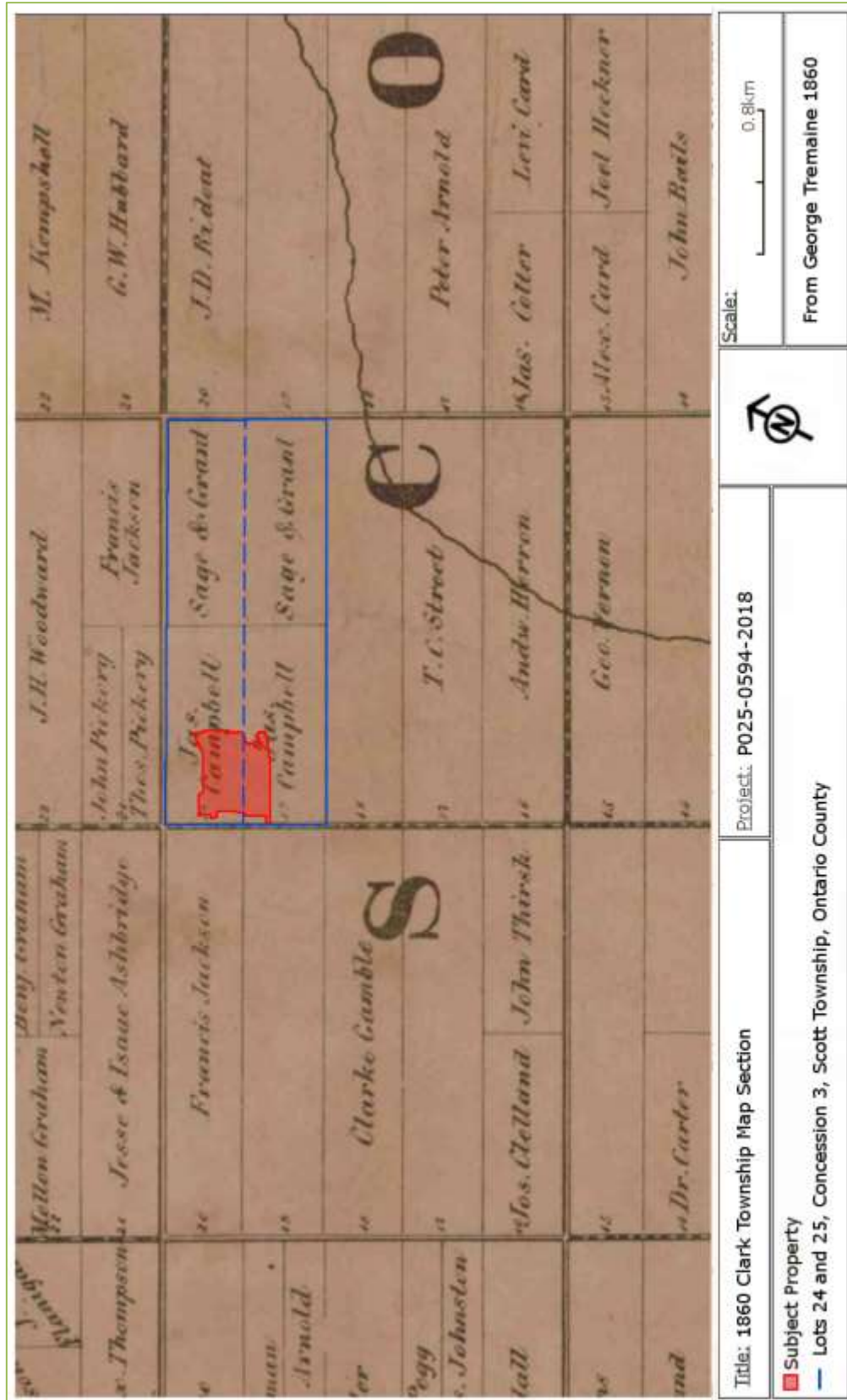
Map 10.4 Aerial View of Study Area



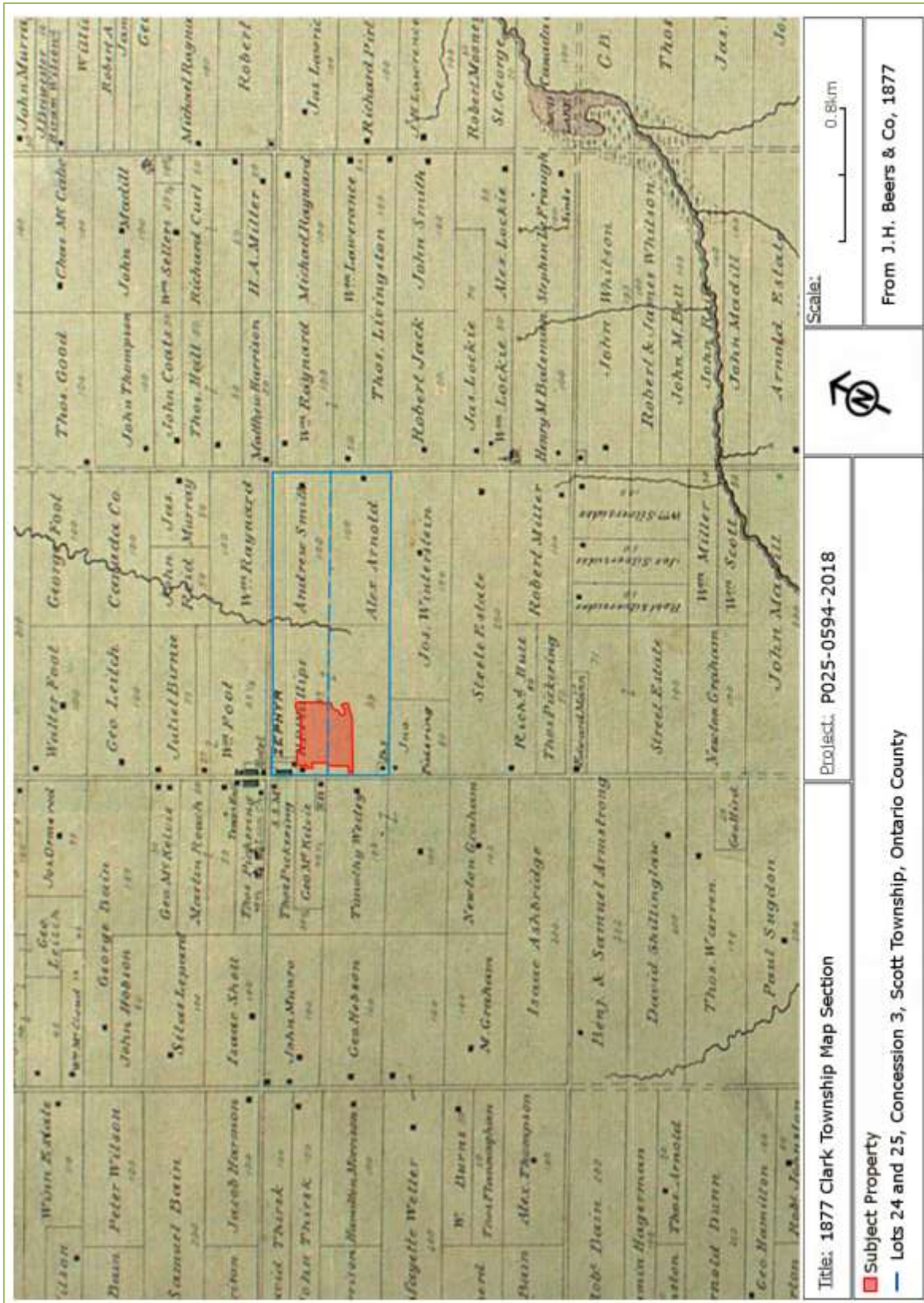
Map 10.5: Stage 3 Excavation Grid Illustration



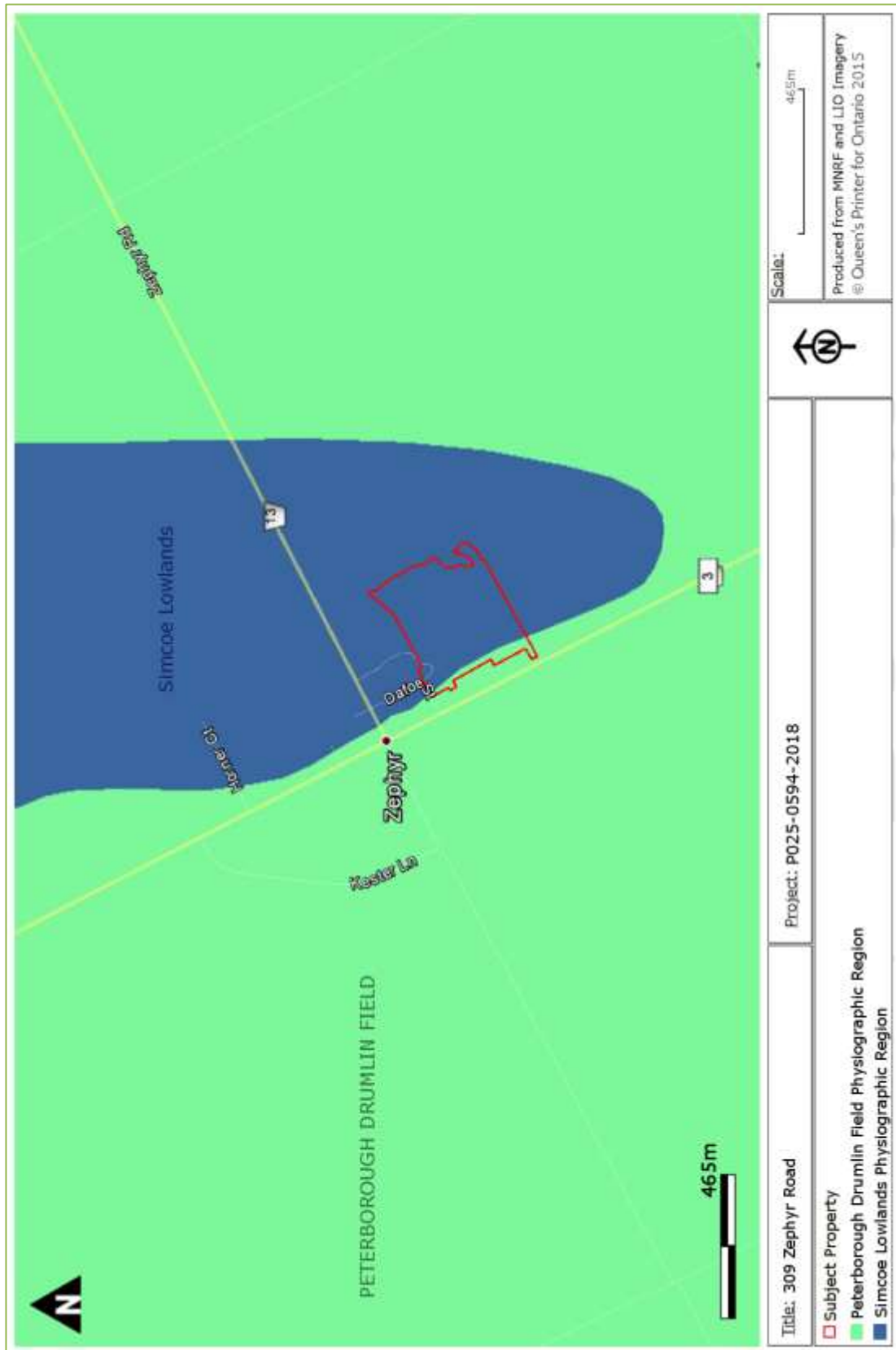
Map 10.6: Section of George Tremaine's 1860 Map of Scott Township



Map 10.7: Section of 1877 Historic Atlas Map of East Whitby



Map 10.8: Regional Physiography of the Subject Property Area





Appendix A: Stage 3 CSP and Excavation Unit Catalog for BbGt-32

Cat#	Qty.	Class	Material	Description	Prov.	Lot	Wgt.
1	1	C	Ironstone	Vessel Base Fragment, Undecorated	SC1	NA	5.14
2	1	G	Dark Olive Glass	Vessel Body Fragment, Undecorated	SC1	NA	12.67
3	1	C	Ironstone	Vessel Base Fragment, Undecorated	SC2	NA	2.93
4	1	M	Iron	Hand wrought Timber Framing Spike	SC2	NA	675
5	1	G	Aqua Glass	Vessel Rim Fragment, Moulded Lips	SC3	NA	15.94
6	1	C	Refined White Earthen Ware	Vessel Base Fragment, Undecorated	SC4	NA	5.27
7	1	C	Ironstone	Vessel Body Fragment, impressed line pattern	SC5	NA	2.48
8	1	G	Pale Green Glass	Vessel Body Fragment, Undecorated	SC5	NA	2.8
9	1	C	Ironstone	Vessel Rim Fragment, Wheat Pattern	SC6	NA	6.79
10	1	C	Ironstone	Vessel Body Fragment, Blue Glaze	SC6	NA	0.97
11	1	C	Ironstone	Vessel Rim Fragment, Undecorated	SC7	NA	6.75
12	1	G	Colourless Glass	Vessel Body Fragment, Undecorated	SC7	NA	2.17
13	1	C	Ironstone	Vessel Rim Fragment, Wheat Pattern	SC8	NA	5.91
14	1	C	Refined White Earthen Ware	Vessel Rim Fragment, Blue transfer Print, Burnt	SC9	NA	9.82
15	1	G	Aqua Glass	Vessel Mouth Fragment, Tooled Finished Mould Blown	SC9	NA	38.28
16	1	G	Colourless Glass	Vessel Body Fragment, Exfoliated	SC9	NA	6.03
17	1	C	Ironstone	Vessel Body Fragment, undecorated	SC10	NA	19.29
18	1	G	Amber Glass	Vessel Body Fragment, Tooled Finish	SC10	NA	34.29
19	1	C	Stoneware	Teapot Rim fragment, Brown Glaze	SC11	NA	37.74
20	1	G	Colourless Glass	Crown Jar Fragment, Embossed Crown and ``_MPE_``	SC11	NA	15.41
21	1	C	Refined White Earthen Ware	Vessel Base Fragment, Undecorated	SC12	NA	10.03
22	1	C	Refined White Earthen Ware	Vessel Body Fragment, Flow Blue Pattern	SC12	NA	9.59
23	1	G	Aqua Glass	Vessel Shoulder Fragment, undecorated	SC12	NA	6.47
24	1	C	Ironstone	Vessel Body Fragment, Undecorated	SC13	NA	4.05



25	1	C	Ironstone	Vessel Body Fragment, Sandy Glaze	SC13	NA	5.36
26	1	C	Porcelain	Vessel Base Fragment, Undecorated	SC14	NA	4.46
27	1	G	Colourless Glass	Vessel Body Fragment, impressed	SC14	NA	1.72
28	1	C	Ironstone	Vessel Rim Fragment, Moulded	SC15	NA	5.41
29	1	C	Coarse Red Earthenware	Vessel Body Fragment, Red Paste, Dijon Glaze	SC15	NA	9.22
30	1	C	Refined White Earthen Ware	Vessel Body Fragment, Undecorated	SC16	NA	1.19
31	1	C	Stoneware	Vessel Body Fragment, Black Paste, Dark Blue and Black and Dijon Glaze	SC16	NA	3.12
32	1	C	Ironstone	Vessel Body Fragment, Impressed banner pattern	SC17	NA	5.65
33	1	C	Refined White Earthen Ware	Vessel Rim Fragment, Undecorated	SC18	NA	2.14
34	1	C	Refined White Earthen Ware	Vessel Rim Fragment, Shellware painted, non Scalloped	SC19	NA	1.21
35	1	C	Porcelain	Vessel Base Fragment, Undecorated	SC20	NA	4
36	1	G	Colourless Glass	Vessel Body Fragment, Undecorated	SC20	NA	7.71
37	1	C	Ironstone	Cup Rim Fragment, painted Gold stripe	SC21	NA	19
38	1	C	Ironstone	Plate Rim Fragment, moulded pattern	SC21	NA	12.41
39	1	C	Ironstone	Cup Rim Fragment, moulded rim decoration	SC21	NA	6.83
40	1	C	Ironstone	Vessel Body Fragment, Undecorated	SC21	NA	1.87
41	1	C	Coarse Red Earthenware	Vessel Body Fragment, Red Paste, Dark Brown Glaze	SC22	NA	1.35
42	1	G	Colourless Glass	Thin Glass Fragment	SC22	NA	2.85
43	1	C	Refined White Earthen Ware	Vessel Body Fragment, Undecorated	SC23	NA	2.94
44	1	C	Porcelain	Vessel Base Fragment, Undecorated	SC24	NA	5.58
45	1	C	Ironstone	Cup Body Fragment, Wheat Pattern	Sc24	NA	15.38
46	1	G	Aqua Glass	Vessel Body Fragment, Undecorated	SC24	NA	1.26
47	1	C	Refined White Earthen Ware	Vessel Body Fragment, Flow Blue	SC25	NA	1.25
48	1	G	Dark Olive Glass	Vessel Neck Fragment	SC26	NA	7.39



49	1	C	Refined White Earthen Ware	Vessel Body Fragment, Undecorated	SC27	NA	2.34
50	1	C	Ironstone	Vessel Base Fragment, Undecorated	SC27	NA	3.79
51	1	C	Ironstone	Vessel Rim Fragment, Moulded Grape	SC28	NA	4.17
52	1	G	Aqua Glass	Bottle Base Fragment, kick-up present	SC28	NA	16.1
53	1	G	Solarized Glass	Vessel Shoulder Fragment, undecorated	SC29	NA	2.16
54	1	C	Refined White Earthen Ware	Vessel Body Fragment, Undecorated	SC30	NA	2.54
55	1	C	Refined White Earthen Ware	Vessel Rim fragment, Flow Blue Pattern	SC31	NA	3.92
56	1	C	Coarse Red Earthenware	Vessel Body Fragment, Red Paste, Grey Glaze	N100 W90	1	2.22
57	1	C	Ironstone	Plate Rim Fragment, Wheat pattern	N100 W90	1	7.11
58	1	C	Stoneware	Vessel Body Fragment, Grey paste, Brown Glaze	N100 W90	1	9.68
59	3	C	Refined White Earthen Ware	Vessel Body Fragment, Undecorated	N100 W90	1	3.04
60	2	G	Aqua Glass	Thin Glass Fragment	N100 W90	1	2.65
61	2	G	Colourless Glass	Thin Glass Fragment	N100 W90	1	2.39
62	1	F	Bone	Mammalian Long bone Fragment, Burnt	N100 W90	1	7.28
63	2	M	Iron	Cut Nail	N100 W90	1	15.35
64	1	C	Stoneware	Vessel Body Fragment, Exfoliated	N105 W75	1	1.92
65	1	C	Ironstone	Vessel Body Fragment, undecorated	N105 W75	1	4.27
66	1	G	Colourless Glass	Thin Glass Fragment	N105 W75	1	1.52
67	1	M	Iron	Cut Nail	N105 W75	1	3.18
68	1	C	Refined White Earthen Ware	Vessel Body Fragment, Flow Blue Pattern	N105 W80	1	1.34
69	1	C	Refined White Earthen Ware	Vessel Body Fragment, Undecorated	N105 W80	1	0.75
70	1	B	White Glass	Button, 4 holes	N105 W80	1	0.94
71	1	F	Bone	Mammalian Long bone Fragment	N105 W80	1	2.41
72	1	M	Iron	Sheet Metal Plate	N105 W80	1	9.53
73	1	M	Iron	Cut Nail	N105 W80	1	9.43



74	1	G	Dark Olive Glass	Vessel Body Fragment, Undecorated	N105 W85	1	3.19
75	1	G	Colourless Glass	Vessel Body Fragment, Undecorated	N105 W85	1	3.89
76	1	G	Blue Glass	Vessel Body Fragment, Undecorated	N105 W85	1	0.9
77	1	F	Shell	Shell fragment	N105 W85	1	1.16
78	1	M	Iron	Cut Nail	N105 W85	1	6.76
79	1	M	Iron	Triangular File Fragment	N105 W85	1	6.24
80	1	C	Refined White Earthen Ware	Vessel Body Fragment, Undecorated	N105W90	1	0.74
81	1	C	Ironstone	Vessel Handle Fragment	N105W90	1	13.17
82	1	G	Amber Glass	Vessel Body Fragment, Undecorated	N105W90	1	3.47
83	3	G	Aqua Glass	Vessel Body Fragment, Undecorated	N105W90	1	6.66
84	1	M	Iron	Cut Chain link Section	N105W90	1	77.6
85	1	M	Iron	Sheet Metal Plate	N105W90	1	3.94
86	1	C	Refined White Earthen Ware	Vessel Body Fragment, Exfoliated	N105 W95	1	2.45
87	1	G	Solarized Glass	Vessel Base Fragment, Kick-up	N105 W95	1	25.24
88	2	G	Aqua Glass	Vessel Mouth Fragment, Tooled Finished Mould Blown	N105 W95	1	5.87
89	1	C	Coarse Red Earthenware	Vessel handle Fragment, Red Paste, red Glaze	N110 W75	1	5.18
90	1	C	Stoneware	Vessel Cup Fragment, Floral pattern impressed	N110 W75	1	13.12
91	1	C	Stoneware	Vessel Body Fragment, Burnt	N110 W75	1	5.06
92	1	C	Stoneware	Vessel Body Fragment, Undecorated	N110 W75	1	5.85
93	1	C	Refined White Earthen Ware	Vessel Body Fragment, polychrome (Green)	N110 W75	1	2.98
94	1	C	Porcelain	Vessel Rim Fragment, Undecorated	N110 W75	1	2.68
95	1	C	Refined White Earthen Ware	Vessel Body Fragment, Undecorated	N110 W75	1	2.3
96	1	C	Refined White Earthen Ware	Vessel Rim Fragment, Brown transferware	N110 W75	1	1.29
97	1	G	Aqua Glass	Vessel Base Fragment, Mould Seams	N110 W75	1	5.33
98	1	G	Aqua Glass	Vessel Base Fragment	N110 W75	1	4.94
99	1	G	Aqua Glass	Vessel Base Fragment	N110 W75	1	7.58



100	1	G	Aqua Glass	Vessel neck Fragment, Seeded	N110 W75	1	8.79
101	1	G	Aqua Glass	Vessel Shoulder Fragment, Seeded	N110 W75	1	8.25
102	2	G	Aqua Glass	Vessel Body Fragment	N110 W75	1	7.14
103	1	G	Colourless Glass	Thin Glass Fragment	N110 W75	1	3.3
104	1	G	Colourless Glass	Vessel Body Fragment	N110 W75	1	1.03
105	1	G	Dark Olive Glass	Vessel Base Fragment, Kick-up	N110 W75	1	10.71
106	1	G	Dark Olive Glass	Spirit Bottle Mouth Fragment, Tooled Finish	N110 W75	1	13.3
107	1	G	Colourless Glass	Moulded vessel base, embosses Floral pattern on the vessel Body	N110 W75	1	29.05
108	1	F	Bone	Bos taurus Calcaneus Fragment	N110 W75	1	27.57
109	1	O	Leather	Leather strap with eyeholes	N110 W75	1	0.3
110	1	M	iron	Indeterminate Cast Iron Fragment	N110 W75	1	488.72
111	4	M	Iron	Cut Nail	N110 W75	1	20.94
112	1	C	Stoneware	Vessel Body Fragment, exfoliated	N110 W85	1	4.43
113	1	C	Refined White Earthen Ware	Vessel Rim Fragment, undecorated	N110 W85	1	1.66
114	1	C	Refined White Earthen Ware	Vessel Rim Fragment, Brown transferware	N110 W85	1	1.5
115	1	C	Coarse Red Earthenware	Vessel Rim Fragment, red Paste, Dijon Glaze	N110 W85	1	10.89
116	1	G	Dark Olive Glass	Vessel Base Fragment	N110 W85	1	9.4
117	1	G	Dark Olive Glass	Vessel Base fragment, Tooled Finish	N110 W85	1	2.99
118	1	G	Amber Glass	Vessel Body Fragment	N110 W85	1	1.83
119	2	G	Aqua Glass	Vessel body Fragment	N110 W85	1	7.9
120	1	G	Blue Glass	Vessel Base Fragment	N110 W85	1	0.98
121	2	M	Iron	Sheet Metal Plate	N110 W85	1	11.91
122	1	M	Brass	Harmonica Plate Fragment	N110 W85	1	3.25
123	1	M	Iron	Cut Nail	N110 W85	1	10.19
124	1	C	Ironstone	Vessel Rim fragment, Tan Glaze, white strip motif	N110 W70	1	3.71
125	1	C	Refined White Earthen Ware	Vessel rim Fragments, exfoliated	N110 W70	1	4.27
126	1	C	Stoneware	Inkwell Base Fragment	N110 W70	1	24.33



127	1	B	White Glass	Button, 4 holes	N110 W70	1	0.44
128	1	G	Colourless Glass	Vessel Body Fragment, Plate Mould ``_TTS_``	N110 W70	1	1.34
129	1	G	Colourless Glass	Vessel Base Fragments, moulded, seeded	N110 W70	1	4.14
130	1	G	Aqua Glass	Vessel Body Fragment, Undecorated	N110 W70	1	2.79
131	1	C	Refined White Earthen Ware	Vessel Body Fragment, Undecorated	N110 W80	1	1.13
132	1	C	Ironstone	Vessel Body Fragment, Wheat pattern	N110 W80	1	6.71
133	2	C	Coarse Red Earthenware	Vessel Body fragment, red Paste, Dijon Glaze	N110 W80	1	9.8
134	1	C	Coarse Red Earthenware	Vessel Body fragment, red Paste, Tan Glaze	N110 W80	1	18.1
135	1	C	Coarse Red Earthenware	Vessel Body Fragment, Red paste, Black interior glaze, brown exterior glaze	N110 W80	1	13.69
136	1	C	Coarse Red Earthenware	Vessel Body fragment, red Paste, Dijon Glaze	N110 W80	1	20.77
137	1	G	Dark Olive Glass	Vessel body Fragment	N110 W80	1	2.19
138	1	G	Aqua Glass	Vessel body Fragment	N110 W80	1	19
139	3	G	Colourless Glass	Vessel body Fragment	N110 W80	1	7.8
140	2	G	Aqua Glass	Vessel body Fragment	N110 W80	1	7.3
141	1	G	Aqua Glass	Vessel Mouth Fragment, Tooled Finished Mould Blown	N110 W80	1	2.34
142	1	G	Amber Glass	Bottle Plug Fragment	N110 W80	1	10.55
143	1	O	Slate	Writing Slate	N110 W80	1	1.36
144	1	F	Teeth	Bos taurus tooth	N110 W80	1	10.03
145	1	M	Iron	Cut Nail	N110 W80	1	7.69
146	1	M	Iron	Indeterminate Cast Iron Fragment	N110 W80	1	78.94
147	1	C	Coarse Red Earthenware	Vessel Body Fragment, red paste, Brown Glaze	N110 W90	1	3.87
148	2	C	Refined White Earthen Ware	Vessel Base Fragments, undecorated	N110 W90	1	15.9
149	1	C	Refined White Earthen Ware	Vessel Body Fragments, Flow Blue	N110 W90	1	3.73
150	1	C	Refined White	Vessel Body Fragment, Undecorated	N110 W90	1	1.21



			Earthen Ware				
151	1	C	Ironstone	Vessel Body Fragment, Wheat pattern	N110 W90	1	1.34
152	1	G	Dark Olive Glass	Spirits bottle Base Fragment, Pitted	N110 W90	1	10.04
153	1	G	Aqua Glass	Vessel Body Fragment	N110 W90	1	1.6
154	1	G	Aqua Glass	Vessel Base Fragment	N110 W90	1	6.13
155	2	G	Colourless Glass	Vessel Body Fragments	N110 W90	1	9.47
156	1	G	Colourless Glass	Vessel Body Fragment, embossed lettering ``_64``	N110 W90	1	23.34
157	2	M	Iron	Cut Nail	N110 W90	1	8.37
158	1	G	Colourless Glass	Vessel Body Fragment	N115 W70	1	6.83
159	1	M	Iron	Sheet Metal curled Object	N115 W70	1	16.08
160	1	C	Coarse Red Earthenware	Vessel Body fragment, red Paste, Dijon Glaze	N115 W75	1	4.39
161	1	C	Coarse Red Earthenware	Vessel Body fragment, red Paste, Brown Glaze	N115 W75	1	1.8
162	1	C	Coarse Red Earthenware	Vessel Body Fragment, red Paste, red exterior glaze, Brown interior Glaze	N115 W75	1	9.66
163	1	C	Coarse Buff Earthenware	Vessel Body Fragment, Buff Paste, tan glaze	N115 W75	1	2.05
164	1	C	Coarse Buff Earthenware	Vessel Body Fragment, Buff Paste, tan glaze	N115 W75	1	2.41
165	1	C	Ironstone	Vessel Base Fragments, undecorated	N115 W75	1	5.77
166	1	C	Ironstone	Vessel Rim Fragment, undecorated	N115 W75	1	7.85
167	1	C	Ironstone	Vessel Body Fragment, Undecorated	N115 W75	1	2.16
168	1	C	Refined White Earthen Ware	Vessel Rim Fragment, undecorated	N115 W75	1	2.13
169	1	C	Refined White Earthen Ware	vessel Body Fragment Polychrome (White and Blue), Black Slip Banding	N115 W75	1	0.97
170	1	G	Green Glass	Vessel Body Fragment	N115 W75	1	3.84
171	2	G	Colourless Glass	Vessel Body Fragment	N115 W75	1	8.91
172	1	G	Colourless Glass	Vessel Fragment, Melted	N115 W75	1	8.74
173	1	G	Aqua Glass	Vessel Body Fragment, Embossed Lettering ``_E_``	N115 W75	1	2.81
174	1	F	Bone	Mammalian Long bone Fragment	N115 W75	1	2.5



175	1	F	Teeth	Bos taurus Pre-Molar	N115 W75	1	6.31
176	1	F	Bone	Mammalian Left Maxilla	N115 W75	1	7.41
177	1	M	Iron	Sheet Metal Plate	N115 W75	1	14.54
178	1	M	Iron	Iron Slag	N115 W75	1	6.08
179	3	M	Iron	Cut Nail	N115 W75	1	13.85
180	1	C	Coarse Red Earthenware	Vessel Body Fragment, red paste, interior Black Glaze, exterior red paint	N115 W80	1	13.1
181	2	C	Coarse Buff Earthenware	Vessel Body Fragment, Buff paste, Dijon Glaze	N115 W80	1	12.71
182	1	C	Coarse Red Earthenware	Vessel Body Fragment, Red paste, Dijon Glaze	N115 W80	1	3.3
183	1	C	Ironstone	Vessel Body Fragment, Undecorated	N115 W80	1	4.23
184	1	C	Refined White Earthen Ware	vessel Body Fragment, Polychrome (White and Blue), Black Slip Banding	N115 W80	1	1.04
185	1	G	Aqua Glass	Vessel Body Fragment	N115 W80	1	2.67
186	1	G	Amber Glass	Vessel Body Fragment	N115 W80	1	3.72
187	1	G	Solarized Glass	Vessel Body Fragment	N115 W80	1	1.62
188	1	F	Bone	mammalian long bone Fragment	N115 W80	1	4.67
189	1	M	Pewter	Small curved piece with countersunk hole	N115 W80	1	4.55
190	1	C	Coarse Buff Earthenware	Vessel Body Fragment, buff Paste, Brown glaze	N115 W85	1	6.1
191	2	C	Refined White Earthen Ware	Vessel Body Fragment, Undecorated	N115 W85	1	3.75
192	1	C	Refined White Earthen Ware	Vessel Rim Fragment, undecorated	N115 W85	1	2.25
193	1	C	Refined White Earthen Ware	Vessel Base Fragment, Undecorated	N115 W85	1	5.33
194	1	C	Refined White Earthen Ware	Vessel Body Fragment, Blue Slip decoration	N115 W85	1	0.45
195	1	C	Refined White Earthen Ware	Vessel Body Fragment, Flow Blue Pattern	N115 W85	1	0.45
196	1	G	Dark Olive Glass	Vessel Body Fragment, Undecorated	N115 W85	1	4.39
197	1	G	Colourless Glass	Thin Glass Fragment	N115 W85	1	2.27



198	1	G	Colourless Glass	Vessel Shoulder fragment	N115 W85	1	4.69
199	1	G	Solarized Glass	Vessel Body Fragment, Undecorated	N115 W85	1	3.25
200	1	G	Aqua Glass	Vessel Base Fragment	N115 W85	1	3.87
201	1	G	Aqua Glass	Vessel Body Fragment	N115 W85	1	4.99
202	1	F	Bone	Mammalian Long bone fragment	N115 W85	1	8.97
203	2	O	Slate	Writing Slate	N115 W85	1	11.32
204	1	M	Iron	Bolt with pin hole at the distal end	N115 W85	1	74.92
205	3	M	Iron	Cut Nail	N115 W85	1	27.85
206	2	C	Coarse Red Earthenware	Vessel Body fragment, red Paste, Brown Glaze	N115 W90	1	26.43
207	2	C	Stoneware	Vessel Rim Fragment, Embossed Ovoid design	N115 W90	1	12.69
208	1	C	Stoneware	Vessel Rim Fragment, undecorated	N115 W90	1	4.12
209	3	C	Stoneware	Vessel Rim Fragment, undecorated	N115 W90	1	7.38
210	2	C	Refined White Earthen Ware	Vessel Body Fragment, Undecorated	N115 W90	1	6.41
211	1	C	Ironstone	Vessel Body Fragment, tan Glaze	N115 W90	1	3.35
212	1	C	Refined White Earthen Ware	Vessel Body Fragment, Flow Blue Pattern	N115 W90	1	3.09
213	1	C	Refined White Earthen Ware	Vessel Rim Fragment, red slip banded	N115 W90	1	1.58
214	2	C	Stoneware	vessel Body fragment, brown glaze	N115 W90	1	5.28
215	1	C	Stoneware	Teapot Spout Fragment, Brown Glaze	N115 W90	1	3.25
216	1	O	Porcelain	Doll Leg fragment	N115 W90	1	7.57
217	1	G	Aqua Glass	Vessel Mouth Fragment, Tooled Finished Mould Blown	N115 W90	1	19.55
218	1	G	Colourless Glass	Vessel Body Fragment, Undecorated	N115 W90	1	3.63
219	1	G	Colourless Glass	Thin Glass Fragment	N115 W90	1	3.24
220	1	G	Colourless Glass	Embossed dish Base	N115 W90	1	14.82
221	1	G	Colourless Glass	Vessel body fragment	N115 W90	1	7.87
222	1	G	Green Glass	Vessel body fragment	N115 W90	1	3.62
223	1	G	Amber Glass	Vessel Body Fragment, kick-up	N115 W90	1	38.89
224	1	G	Amber Glass	Vessel Mouth Fragment	N115 W90	1	5.29
225	1	F	Bone	Bos taurus Long bone Fragment, Machine cut	N115 W90	1	107.04



226	1	M	Iron	Sheet Metal Plate	N115 W90	1	9.77
227	1	M	Brass	Misc. metal fragment	N115 W90	1	3.95
228	3	C	Refined White Earthen Ware	Vessel Body Fragment, Undecorated	N119 W83	1	8.23
229	1	C	Refined White Earthen Ware	Vessel Body Fragment, Undecorated	N119 W83	1	12.25
230	1	C	Refined White Earthen Ware	Vessel Body Fragment, Burnt	N119 W83	1	1.79
231	1	C	Refined White Earthen Ware	Vessel Rim fragment, Blue Willow Pattern	N119 W83	1	1.08
232	1	C	Refined White Earthen Ware	Vessel Base Fragment, Undecorated	N119 W83	1	20.17
233	1	C	Coarse Buff Earthenware	Vessel Body Fragment, tan Glaze	N119 W83	1	2.42
234	1	C	Coarse Red Earthenware	Vessel Body fragment, Red paste, red Glaze	N119 W83	1	2.81
235	1	C	Coarse Red Earthenware	Vessel Body fragment, Red paste, tan Glaze	N119 W83	1	1.6
236	1	G	Solarized Glass	Vessel Body Fragment	N119 W83	1	3.19
237	1	G	Aqua Glass	vessel Base Fragment	N119 W83	1	5.69
238	1	G	Green Glass	Vessel Body Fragment	N119 W83	1	4.73
239	1	F	Bone	Mammalian scapula Fragment	N119 W83	1	1.71
240	1	F	Bone	Mammalian Left Maxilla fragment	N119 W83	1	2
241	1	F	Shell	Shell fragment	N119 W83	1	0.85
242	1	M	Iron	Indeterminate Cast Iron Fragment	N119 W83	1	19.92
243	1	M	Iron	Cast Iron Pot Rim Fragment	N119 W83	1	67.47
244	1	M	Iron	Cut Nail	N119 W83	1	21.43
245	1	C	Stoneware	Vessel Base Fragment, exfoliated	N120 W78	1	6.87
246	1	C	Coarse Red Earthenware	Vessel Base Fragment, red paste, Brown interior Glaze, Green/Brown exterior glaze	N120 W78	1	19.09
247	1	C	Stoneware	Vessel Body Fragment, Dijon Glaze	N120 W78	1	7.59
248	1	C	Ironstone	Vessel Base Fragment, Undecorated	N120 W78	1	22.09



249	8	C	Refined White Earthen Ware	Vessel Body Fragment, Undecorated	N120 W78	1	19.34
250	1	P	White Clay	Pipe Heel and stem	N120 W78	1	4.71
251	2	G	Aqua Glass	Vessel Shoulder Fragment	N120 W78	1	4.32
252	1	G	Aqua Glass	Thin Glass Fragment	N120 W78	1	3.21
253	1	G	Solarized Glass	Vessel Body fragment, embossed shell motif	N120 W78	1	1.79
254	1	G	Aqua Glass	Vessel Body Fragment	N120 W78	1	4.25
255	1	G	Aqua Glass	Vessel Body fragment, embossed lettering "_NTO_"	N120 W78	1	5.22
256	1	G	Aqua Glass	Vessel Body fragment, embossed lettering '&' "_MOW_"	N120 W78	1	6.16
257	3	G	Green Glass	Vessel Body Fragment, Undecorated	N120 W78	1	14.82
258	1	F	Shell	Shell fragment	N120 W78	1	1.18
259	1	F	Bone	Mammalian long Bone fragment	N120 W78	1	2.55
260	1	F	Bone	Mammalian long Bone fragment	N120 W78	1	1.83
261	1	F	Bone	Mammalian Maxilla fragment	N120 W78	1	3.61
262	6	M	Iron	Cut Nail	N120 W78	1	32.68
263	1	G	Aqua Glass	Vessel Base Fragment, seeded, MM "ERIE"	N120 W75	1	2.45
264	1	G	Aqua Glass	Vessel Body Fragment, seeded	N120 W75	1	5.65
265	1	C	Coarse Red Earthenware	Vessel Body Fragment, red paste, Black Glaze	N120 W75	1	2.83
266	1	C	Stoneware	Vessel Body Fragment, Dijon Glaze	N120 W75	1	2.85
267	1	C	Ironstone	Vessel Body Fragment, Molding decoration	N120 W75	1	1.16
268	1	O	Slate	Slate Stylus	N120 W75	1	1.97
269	1	M	Screw	screw	N120 W75	1	2.25
270	1	M	Iron	Wire Nail	N120 W75	1	4.02
271	1	M	iron	4" wire Nail	N120 W75	1	12.29
272	1	M	Iron	Cast Iron planter Blade	N120 W75	1	169.5
273	1	C	Refined White Earthen Ware	Vessel Body Fragment, Hand Painted monochrome (Brown)	N120 W80	1	11.73
274	1	C	Stoneware	Vessel Body Fragment, Dijon Glaze	N120 W80	1	2.02
275	1	C	Stoneware	Crock Rim Fragment, Brown Glaze	N120 W80	1	22.8
276	1	C	Ironstone	Vessel Rim Fragment, Dark Olive Banded (2 Strips)	N120 W80	1	3.9



277	1	C	Refined White Earthen Ware	Vessel Rim Fragment, Blue (Slip) Checkered Pattern	N120 W80	1	11.23
278	1	C	Refined White Earthen Ware	Vessel Rim Fragment, Brown Sponge ware in an "X" pattern	N120 W80	1	3.26
279	1	C	Refined White Earthen Ware	Vessel Rim Fragment, Blue Shell Edge painted, non-scalloped	N120 W80	1	1.82
280	1	C	Ironstone	Vessel Base Fragment, Undecorated	N120 W80	1	4.22
281	1	C	Ironstone	Vessel Rim Fragment, undecorated	N120 W80	1	4.91
282	1	C	Ironstone	Vessel Body Fragment, Undecorated	N120 W80	1	5.57
283	1	C	Ironstone	Vessel Rim Fragment, Burnt	N120 W80	1	1.59
284	1	C	Refined White Earthen Ware	Vessel Base Fragment, Undecorated	N120 W80	1	2.63
285	1	G	Dark Olive Glass	Vessel Base Fragment	N120 W80	1	8.57
286	1	G	Colourless Glass	Window Glass Fragment	N120 W80	1	1.78
287	1	G	Colourless Glass	Thin Glass Fragment	N120 W80	1	2.84
288	1	M	Iron	Bolt with Square nut rusted to the threading	N120 W80	1	17.01
289	1	C	Stoneware	Vessel Body Fragment, Dijon Glaze	N120 W85	1	1.52
290	1	C	Ironstone	Vessel Rim Fragment, undecorated	N120 W85	1	6.2
291	1	C	Ironstone	Vessel Base Fragment, Undecorated	N120 W85	1	5.98
292	1	C	Refined White Earthen Ware	Vessel Base Fragment, Undecorated	N120 W85	1	2.21
293	3	C	Ironstone	Vessel Body Fragment, Undecorated	N120 W85	1	5.34
294	1	G	Colourless Glass	Thin Glass Fragment	N120 W85	1	3.27
295	1	G	Colourless Glass	Window Glass Fragment	N120 W85	1	1.15
296	1	C	Porcelain	Small 4 hole Button	N120 W85	1	0.23
297	1	O	Slate	Writing Slate	N120 W85	1	0.9
298	1	M	Iron	Cast Iron Pot Rim Fragment	N120 W85	1	88.38
299	1	M	Iron	Bent Wire Nail	N120 W85	1	12.41
300	1	M	Iron	Cut Nail	N120 W85	1	4.28
301	1	C	Refined White Earthen Ware	Vessel Body Fragment, Undecorated	N120 W90	1	2.99
302	1	G	Dark Olive Glass	Vessel Body Fragment, Undecorated	N120 W90	1	1.18



303	1	M	Iron	Cast Iron Pot Base Fragment	N120 W90	1	35.33
304	1	M	Iron	Cut Nail	N120 W90	1	3.25
305	2	C	Coarse Red Earthenware	Vessel Body Fragment, Dijon Glaze, Red Paste	N123 W83	1	7.3
306	1	C	Coarse Red Earthenware	Vessel Body Fragment, Brown Glaze, exfoliated, Red Paste	N123 W83	1	2.07
307	1	C	Coarse Red Earthenware	Vessel Body Fragment, internal grey Glaze, External Burgundy Glaze, Red Paste	N123 W83	1	4.88
308	2	C	Coarse Red Earthenware	Vessel Body Fragments, Brown Glaze, Red Paste	N123 W83	1	2.55
309	1	C	Coarse Buff Earthenware	Vessel Body Fragment, Dijon Glaze, buff Paste	N123 W83	1	0.74
310	1	C	Refined White Earthen Ware	Vessel Body Fragment, Blue Willow	N123 W83	1	1
311	1	C	Refined White Earthen Ware	Vessel Body fragment, Sponge ware (Purple)	N123 W83	1	0.98
312	1	C	Refined White Earthen Ware	Vessel Rim Fragment, Blue Slip Banded (3 lines)	N123 W83	1	1.11
313	1	C	Refined White Earthen Ware	Vessel Body Fragment, Stripped Vessel (Blue)	N123 W83	1	0.81
314	1	C	Refined White Earthen Ware	Cup Body Fragment, Handle Moulding present	N123 W83	1	1.95
315	1	C	Ironstone	Vessel Base Fragment, MM "_E" , Crown Insignia	N123 W83	1	8.7
316	1	C	Ironstone	Tea Cup Rim Fragment, moulded Rim Pattern	N123 W83	1	9.91
317	1	C	Ironstone	Vessel Rim Fragment, wheat Pattern	N123 W83	1	7.39
318	1	C	Ironstone	Vessel Body Fragment, Wheat pattern	N123 W83	1	2.33
319	1	C	Ironstone	Vessel Rim Fragment, Moulded Pattern below the Rim	N123 W83	1	5.05
320	1	C	Ironstone	Vessel Body Fragment, Undecorated	N123 W83	1	11.64
321	1	C	Ironstone	Bowl Base Fragment, Square Base, hand inscribed "9"	N123 W83	1	16.39
322	1	C	Refined White Earthen Ware	Bowl Rim Fragment, Undecorated	N123 W83	1	13.75
323	1	C	Refined White Earthen Ware	Vessel Base Fragment, Undecorated	N123 W83	1	5.78



324	1	C	Refined White Earthen Ware	Vessel Rim Fragment, Burnt	N123 W83	1	2.17
325	9	C	Refined White Earthen Ware	Vessel Body Fragment, Undecorated	N123 W83	1	11.62
326	1	G	Colourless Glass	Bowl base Fragment, Moulded Fan Pattern	N123 W83	1	32.33
327	1	G	Colourless Glass	Goblet Base Fragment, Moulded, 2 Mould Seams visible on Fragment, around the base edge and one towards the stem	N123 W83	1	16.39
328	1	G	Aqua Glass	Vessel Body Fragment, Burnt	N123 W83	1	5.74
329	2	G	Aqua Glass	Vessel Body Fragment, Undecorated	N123 W83	1	9.34
330	6	G	Colourless Glass	Window Glass Fragment	N123 W83	1	11.83
331	1	B	"Black" Glass	2 Hole Button	N123 W83	1	0.82
332	1	B	Porcelain	4 Hole Button	N123 W83	1	0.38
333	1	O	Mortar	Construction Mortar	N123 W83	1	32.12
334	1	F	Bone	Mammalian cortical Bone Fragment	N123 W83	1	1.95
335	1	F	Bone	Mammalian Long bone fragment	N123 W83	1	3.11
336	1	F	Bone	Mammalian Rib Fragment	N123 W83	1	3.35
337	1	F	Bone	Mammalian Rib Fragment	N123 W83	1	1.9
338	1	F	Bone	Mammalian Scapula Fragment	N123 W83	1	2.41
339	1	F	Bone	Mammalian long bone epiphyses	N123 W83	1	3.91
340	1	F	Bone	sus Scrofa Rib Fragment	N123 W83	1	17.05
341	1	F	Bone	Bos taurus rib Fragment	N123 W83	1	11.59
342	1	F	Bone	Bos taurus Medial Phalanges	N123 W83	1	30.56
343	1	M	Iron	Hand wrought Nail	N123 W83	1	12.42
344	2	M	Iron	Wire Nail	N123 W83	1	17.6
345	1	M	Iron	Lathe Cut Nail	N123 W83	1	1.42
346	1	M	Iron	Cast Iron Fragment	N123 W83	1	59.54
347	1	M	Iron	Wall Mounted eyelet	N123 W83	1	51
348	11	M	Iron	Cut Nail	N123 W83	1	69.69
349	2	C	Refined White Earthen Ware	Vessel Rim Fragment, Blue shelledge painted, non-Scalloped	N124 W78	1	0.45
350	1	C	Ironstone	Vessel Body fragment, Floral moulded decoration	N124 W78	1	2.98



351	1	C	Ironstone	vessel Base Fragment, undecorated	N124 W78	1	2.26
352	1	C	Porcelain	Tea cup Rim Fragment	N124 W78	1	1.6
353	1	C	Coarse Red Earthenware	Vessel Base Fragment, Dark brown Glaze, Red Paste, exfoliated	N124 W78	1	1.48
354	1	G	Refined White Earthen Ware	Vessel Body Fragment, Undecorated	N124 W78	1	5.35
355	1	G	Aqua Glass	Melted Glass Fragment	N124 W78	1	2.65
356	1	G	Olive Glass	Vessel Body Fragment	N124 W78	1	3.09
357	3	G	Colourless Glass	Vessel Body Fragment	N124 W78	1	4.9
358	1	O	Slate	Writing Slate	N124 W78	1	2.69
359	1	F	Bone	mammalian long bone Fragment	N124 W78	1	2.43
360	1	F	Bone	Sus scrofa Canine	N124 W78	1	3.32
361	1	M	Iron	Wire Nail	N124 W78	1	3.84
362	1	M	Iron	Cut Nail	N124 W78	1	21.98
363	1	C	Coarse Red Earthenware	jar Rim Fragment, Brown Glaze, Red Paste	N125 W75	1	4.53
364	2	C	Coarse Red Earthenware	Vessel Body Fragment, Brown Glaze, red Paste	N125 W75	1	7.22
365	1	C	Refined White Earthen Ware	Vessel Body Fragment, polychrome painted (Blue)	N125 W75	1	0.98
366	1	C	Ironstone	Vessel Rim Fragment, Brown transferware	N125 W75	1	5.11
367	1	C	Refined White Earthen Ware	Vessel Rim Fragment, undecorated	N125 W75	1	1.53
368	2	C	Refined White Earthen Ware	Vessel Body Fragment, undecorated	N125 W75	1	5.52
369	1	G	Aqua Glass	Bottle Base Fragment	N125 W75	1	30.62
370	1	F	Tooth	Sus scrofa Pre Molar	N125 W75	1	1.59
371	1	F	Tooth	Sus scrofa incisor	N125 W75	1	3.35
372	2	F	Bone	Sus scrofa medial phalanges	N125 W75	1	6.75
373	1	F	Bone	Sus scrofa Proximal Phalanges	N125 W75	1	4.53
374	1	M	Lead	Lead Ball with cut marks	N125 W75	1	34.17
375	1	M	Iron	Cut Nail	N125 W75	1	7.39



376	1	C	Refined White Earthen Ware	Vessel Body Fragment, Flow Blue Pattern	N125 W80	1	1.12
377	1	C	Ironstone	Childs Tea Cup handle Fragment	N125 W80	1	0.71
378	1	C	Refined White Earthen Ware	Vessel Rim Fragment, undecorated	N125 W80	1	6.01
379	1	C	Ironstone	Vessel Body Fragment	N125 W80	1	1.39
380	1	C	Coarse Red Earthenware	Crockery Rim Fragment, Brown interior and exterior Glaze, red paste	N125 W80	1	28.26
381	1	C	Coarse Red Earthenware	Vessel Body Fragment, Blown Glaze, exfoliated, red paste	N125 W80	1	9.53
382	1	G	Colourless Glass	Vessel Body Fragment, Undecorated	N125 W80	1	1.05
383	1	G	Colourless Glass	Window Glass Fragment	N125 W80	1	1.87
384	1	G	Dark Olive Glass	Vessel Body Fragment	N125 W80	1	0.8
385	1	M	Iron	Large Iron Pin	N125 W80	1	71.88
386	1	M	Iron	Rattail File Fragment with Partial Tang	N125 W80	1	16.38
387	1	M	Iron	Cut Nail	N125 W80	1	3.95
388	1	C	Coarse Red Earthenware	Vessel Body fragment, Interior Dijon Glaze	N125 W85	1	29.63
389	1	C	Coarse Buff Earthenware	vessel Body Fragment, tan glaze, buff paste, exfoliated	N125 W85	1	2.45
390	1	C	Ironstone	Vessel Base Fragment, Brown Glaze,	N125 W85	1	5.95
391	1	C	Ironstone	Tea Saucer Fragment, Wheat pattern	N125 W85	1	11.69
392	1	C	Ironstone	Vessel rim fragment, Brown Transferware, Moulded edges	N125 W85	1	11.93
393	1	C	Refined White Earthen Ware	Vessel Body Fragment, Blue Willow	N125 W85	1	1.87
394	1	C	Refined White Earthen Ware	Vessel Rim Fragment, decorative band with Scene, Green transferware	N125 W85	1	3.39
395	1	O	Red Clay	Brick Fragment, Red Paste	N125 W85	1	15.88
396	1	O	Orange Clay	Brick Fragment, Orange Paste, Burnt	N125 W85	1	9.48
397	1	G	Colourless Glass	Moulded oil Lamp base Fragment	N125 W85	1	46.16
398	1	G	Aqua Glass	Vessel base Fragment, 3-Part Mould, Base inscription "G7"	N125 W85	1	23.66



399	1	G	Aqua Glass	Bottle Mouth Fragment, Tooled Finish	N125 W85	1	12.96
400	1	G	Dark Olive Glass	Vessel Body Fragment, Undecorated	N125 W85	1	8.14
401	1	G	Colourless Glass	Vessel Body Fragment, Undecorated	N125 W85	1	1.71
402	1	G	Colourless Glass	Vessel Rim Fragment, Melted	N125 W85	1	4.53
403	2	C	Porcelain	Small Ribbed Button, 4 Holes	N125 W85	1	0.57
404	1	O	Slate	Slate Stylus	N125 W85	1	1.78
405	1	F	Bone	Sus Scrofa meta-tarsal	N125 W85	1	2.99
406	1	F	Bone	Sus Scrofa Vertebra Fragment	N125 W85	1	6.33
407	1	M	Iron	metal Pin	N125 W85	1	10.38
408	1	M	Iron	Wire Nail	N125 W85	1	6.14
409	1	M	Iron	Cut Nail	N125 W85	1	8.76
410	1	C	Coarse Red Earthenware	Vessel Body Fragment, Red Paste	N125 W87	1	2.84
411	1	C	Coarse Buff Earthenware	Vessel Body Fragment, buff paste, Dijon Glaze	N125 W87	1	15.16
412	1	C	Coarse Buff Earthenware	Vessel Body Fragment, buff Paste, tan glaze	N125 W87	1	3.35
413	1	C	Refined White Earthen Ware	Plate Rim Fragment, Brown Transferware, Flora Motif, Moulded edges	N125 W87	1	10.3
414	1	C	Ironstone	Vessel Base Fragment, MM "_ROIT" "_NE" "CH_" "C_"	N125 W87	1	1.06
415	1	C	Ironstone	Vessel Body Fragment, undecorated	N125 W87	1	5.84
416	1	C	Ironstone	Vessel Base Fragment, undecorated	N125 W87	1	4.3
417	1	C	Ironstone	Vessel Body Fragment, undecorated	N125 W87	1	4.27
418	1	C	Ironstone	Vessel Body Fragment, Molding decoration	N125 W87	1	1.51
419	1	C	Ironstone	Vessel Rim Fragment, Ovoid Molding	N125 W87	1	10.6
420	1	C	Ironstone	Vessel Base Fragment, Burnt	N125 W87	1	1.66
421	1	C	Refined White Earthen Ware	Vessel Body Fragment, Undecorated	N125 W87	1	1.97
422	1	G	Aqua Glass	Bottle Body Fragment, Mould Seams Present	N125 W87	1	6.67
423	1	G	Dark Olive Glass	Vessel Shoulder Fragment	N125 W87	1	2.07
424	1	G	Colourless Glass	Vessel Shoulder Fragment	N125 W87	1	2.58
425	1	G	Colourless Glass	Vessel Shoulder Fragment	N125 W87	1	1.52



426	3	G	Colourless Glass	Thin Glass Fragment	N125 W87	1	10.22
427	1	F	Bone	Avian Long bone Fragment	N125 W87	1	1.73
428	1	F	Bone	Gallus gallus domesticus Tarsometatarsis	N125 W87	1	1.57
429	1	F	Bone	Small Avian Pelvis R. Side	N125 W87	1	0.5
430	1	F	Shell	Freshwater Bi-Valve Shell fragment	N125 W87	1	2.91
431	1	M	Iron	Nail Set	N125 W87	1	19.48
432	1	M	Iron	Fence Wire	N125 W87	1	2.75
433	1	M	Iron	Square headed Bolt	N125 W87	1	17.84
434	7	M	Iron	Cut Nail	N125 W87	1	46.03
435	1	C	Coarse Red Earthenware	Vessel Body Fragment, dark Brown Glaze, Red Paste, Exfoliated	N125 W90	1	2.54
436	1	C	Refined White Earthen Ware	Vessel Rim Fragment, Slip Banded (Brown)	N125 W90	1	1.95
437	1	C	Refined White Earthen Ware	Vessel Base Fragment, undecorated	N125 W90	1	9.81
438	1	C	Refined White Earthen Ware	Vessel Body Fragment	N125 W90	1	2.93
439	1	G	Aqua Glass	Bottle Mouth Fragment, seeded	N125 W90	1	3.91
440	1	G	Aqua Glass	Bottle Neck Fragment, seeded	N125 W90	1	3.37
441	1	G	Aqua Glass	Vessel Shoulder Fragment, Seeded	N125 W90	1	2.45
442	1	G	Colourless Glass	Window Glass Fragment	N125 W90	1	3.39
443	1	M	Iron	Cut Nail	N125 W90	1	4.83
444	1	C	Refined White Earthen Ware	Vessel Body Fragment, Blue Willow	N127 W77	1	2.07
445	1	C	Refined White Earthen Ware	Vessel Body fragment, Blue Transferware, burnt	N127 W77	1	1.55
446	2	C	Refined White Earthen Ware	Vessel body Fragment, undecorated	N127 W77	1	3.91
447	1	G	Dark Olive Glass	Vessel Body Fragment, Undecorated	N127 W77	1	3.33
448	1	G	Colourless Glass	Vessel Body Fragment, Undecorated	N127 W77	1	0.81
449	1	G	Colourless Glass	Melted Glass Fragment	N127 W77	1	3.59
450	1	M	Iron	Cut Nail	N127 W77	1	10



451	1	C	Coarse Red Earthenware	Vessel Body Fragment, Brown Glaze, red Paste, exfoliated	N127 W82	1	4.16
452	2	C	Coarse Red Earthenware	Vessel Body Fragment, Dijon Glaze, Red Paste Exfoliated	N127 W82	1	4.67
453	1	C	Refined White Earthen Ware	Vessel Rim fragment, Blue Willow Pattern	N127 W82	1	1.78
454	2	C	Refined White Earthen Ware	Vessel Body Fragment, Blue Willow	N127 W82	1	3.88
455	1	G	Colourless Glass	Oil Lamp Base Fragment, Moulded	N127 W82	1	20.58
456	1	G	Aqua Glass	Vessel Body Fragment, undecorated	N127 W82	1	2.24
457	1	G	Colourless Glass	Vessel Body Fragment, undecorated	N127 W82	1	2.23
458	1	F	Bone	Gallus gallus domesticus Tarsal-metatarsis	N127 W82	1	2.75
459	1	F	Bone	Sus scrofa Rib Fragment	N127 W82	1	5.05
460	1	F	Bone	Avian Long bone Fragment	N127 W82	1	0.57
461	1	M	Iron	Washer	N127 W82	1	3.42
462	1	M	Iron	Wire Nail	N127 W82	1	5.05
463	4	M	Iron	Cut Nail	N127 W82	1	29.7
464	1	C	Refined White Earthen Ware	Vessel Body Fragment, Moulded Decoration	N130 W70	1	3.35
465	1	C	Refined White Earthen Ware	Vessel Rim Fragment, Moulded	N130 W70	1	11.79
466	1	C	Ironstone	Vessel Base Fragment, undecorated	N130 W70	1	4.04
467	1	C	Refined White Earthen Ware	Vessel Base Fragment, MM Crown Motif	N130 W70	1	2.79
468	2	C	Ironstone	Vessel Body Fragment, Undecorated	N130 W70	1	5.16
469	1	G	Colourless Glass	Window Glass Fragment	N130 W70	1	2.88
470	1	F	Bone	Lrg. Mammalian Femur Fragment, Greater Trochanter	N130 W70	1	6.53
471	1	M	Iron	Hinge fragment	N130 W70	1	16.9
472	1	M	Iron	Heavy Wire	N130 W70	1	19.9
473	1	M	Iron	Cut Nail	N130 W70	1	11.24
474	1	C	Refined White Earthen Ware	Vessel Rim Fragment, brown transferware, Floral Pattern	N130 W75	1	3.31



475	1	C	Ironstone	Vessel Base Fragment, Burnt	N130 W75	1	25.09
476	1	C	Ironstone	Vessel Rim fragment, Burnt	N130 W75	1	7.42
477	5	C	Refined White Earthen Ware	Vessel body Fragment, undecorated	N130 W75	1	14.82
478	1	C	Porcelain	Vessel Rim Fragment, undecorated	N130 W75	1	4.58
479	1	G	Colourless Glass	Ribbed vessel fragment, Melted	N130 W75	1	2.13
480	1	G	Colourless Glass	Vessel body Fragment, undecorated	N130 W75	1	2.08
481	1	G	Colourless Glass	Vessel body Fragment, undecorated	N130 W75	1	2.07
482	1	G	Colourless Glass	Vessel body Fragment, undecorated	N130 W75	1	1.3
483	1	C	Refined White Earthen Ware	Vessel Body Fragment, Flow Blue Pattern	N130 W80	1	0.86
484	1	C	Refined White Earthen Ware	Vessel Shoulder Fragment, polychrome Fragment (blue), Floral pattern	N130 W80	1	2.21
485	1	C	Refined White Earthen Ware	Vessel Base Fragment, undecorated	N130 W80	1	5.46
486	1	C	Refined White Earthen Ware	Vessel Handle Fragment, undecorated	N130 W80	1	0.94
487	5	C	Refined White Earthen Ware	Vessel body Fragment, undecorated	N130 W80	1	9.06
488	1	F	Bone	mammalian long bone Fragment	N130 W80	1	2.18
489	1	G	Dark Olive Glass	Vessel body Fragment, undecorated	N130 W80	1	9.36
490	1	G	Aqua Glass	Vessel Body Fragment, Mould seam	N130 W80	1	3.88
491	1	G	Aqua Glass	Vessel Mouth Fragment, Tooled Finished Mould Blown, seeded	N130 W80	1	7.29
492	2	G	Colourless Glass	Vessel Body Fragment	N130 W80	1	3.1
493	4	M	Iron	Cut Nail	N130 W80	1	18.22
494	1	C	Coarse Red Earthenware	Vessel Body fragment, red Paste, Brown Glaze	N130 W85	1	5.03
495	1	C	Coarse Red Earthenware	Vessel Rim Fragment, red Paste, Dijon Glaze	N130 W85	1	2.72
496	1	C	Refined White Earthen Ware	Vessel Rim fragment, Blue Willow Pattern	N130 W85	1	0.94
497	1	C	Refined White	Vessel Body Fragment, Blue Willow	N130 W85	1	1.7



			Earthen Ware				
498	1	C	Refined White Earthen Ware	Vessel Base Fragment, undecorated	N130 W85	1	4.57
499	1	C	Refined White Earthen Ware	Vessel Rim Fragment, undecorated	N130 W85	1	1.93
500	1	C	Refined White Earthen Ware	Vessel Body Fragment, undecorated	N130 W85	1	1.01
501	1	G	Aqua Glass	Vessel Neck Fragment, moulded seam	N130 W85	1	1.38
502	1	G	Dark Olive Glass	Spirits bottle Base Fragment, Pitted	N130 W85	1	32.81
503	1	F	Tooth	Sus scrofa incisor	N130 W85	1	1.46
504	1	O	Slate	Writing Slate	N130 W85	1	0.84
505	1	M	Iron	Cut Nail	N130 W85	1	6.47
506	1	C	Coarse Red Earthenware	Vessel Body Fragment, red paste, red Glaze	N130 W90	1	1.95
507	1	C	Coarse Red Earthenware	Vessel Body fragment, red Paste, Brown Glaze	N130 W90	1	2.3
508	1	C	Coarse Buff Earthenware	Vessel Body Fragment, buff Paste, Drk. Brown Glaze on Interior and exterior, handle attachment present	N130 W90	1	2.84
509	1	C	Coarse Buff Earthenware	Vessel Body Fragment, buff Paste, Drk. Brown Glaze on Interior and exterior, Moulded dotted decoration	N130 W90	1	6.22
510	1	C	Refined White Earthen Ware	Vessel Rim Fragment, undecorated	N130 W90	1	1.77
511	2	C	Refined White Earthen Ware	Vessel Body fragment	N130 W90	1	2.61
512	1	G	Colourless Glass	Vessel Body Fragment	N130 W90	1	8.45
513	1	G	Colourless Glass	Vessel Body Fragment	N130 W90	1	1.61
514	1	G	Colourless Glass	Vessel Body Fragment	N130 W90	1	0.95
515	1	G	Colourless Glass	Window Glass Fragment	N130 W90	1	2.18
516	1	G	Dark Olive Glass	Vessel base Fragment	N130 W90	1	18.64
517	1	F	Bone	Mammalian scapula Fragment, cut Marks	N130 W90	1	2.15
518	1	M	iron	Wire Nail	N130 W90	1	6.6
519	1	M	Iron	Bolt with Square nut rusted to the threading	N130 W90	1	15.82



520	1	C	Refined White Earthen Ware	Vessel Body Fragment, Sponge ware (Blue), Burnt	N135 W75	1	1.61
521	1	C	Refined White Earthen Ware	Vessel Body Fragment, Flow Blue Pattern	N135 W75	1	1.49
522	1	C	Ironstone	Vessel Body Fragment, undecorated	N135 W75	1	7.84
523	1	C	Refined White Earthen Ware	Vessel Body Fragment, undecorated	N135 W75	1	4.43
524	1	C	Ironstone	Vessel Base Fragment, Burnt	N135 W75	1	2.89
525	1	C	Ironstone	Vessel Body Fragment, Burnt	N135 W75	1	3.67
526	1	B	Porcelain	Lrg. 2 Hole Button white "agate" with angled edges	N135 W75	1	4.04
527	1	G	Dark Olive Glass	Vessel mouth Fragment, Tooled Finish, seeded	N135 W75	1	15.45
528	1	C	Coarse Buff Earthenware	Vessel Body Fragment, buff Paste, tan glaze	N135 W80	1	1.62
529	1	C	Refined White Earthen Ware	Plate Rim fragment, Polychrome Painted (Green and Purple)	N135 W80	1	2.58
530	1	C	Refined White Earthen Ware	Vessel Base Fragment, undecorated	N135 W80	1	0.77
531	2	C	Refined White Earthen Ware	Vessel body Fragment, undecorated	N135 W80	1	2.4
532	1	G	Aqua Glass	Vessel Mouth Fragment, tooled Finish	N135 W80	1	2.2
533	1	G	Aqua Glass	Vessel Neck Fragment, moulded seam	N135 W80	1	1.15
534	1	G	Colourless Glass	Vessel Body Fragment	N135 W80	1	1.07
535	1	G	Green Glass	Vessel Body Fragment, Melted Glass	N135 W80	1	2.06
536	1	G	Dark Olive Glass	Vessel Base Fragment, pitted	N135 W80	1	11.57
537	2	M	Iron	Lathe Cut Nail	N135 W80	1	6.29
538	3	M	Iron	Cut Nail	N135 W80	1	9.47
539	1	M	Iron	Chain Link Section	N135 W80	1	58.77
540	1	C	Refined White Earthen Ware	Plate Base Fragment, Blue Willow Pattern, MM Crown Insignia "S_"	N135 W85	1	44.68
541	1	C	Refined White Earthen Ware	Plate Rim Fragment, Blue Willow pattern	N135 W85	1	14.38
542	1	C	Refined White Earthen Ware	Bowl Rim Fragment, Slip Banded (Blue), Burnt	N135 W85	1	5.52

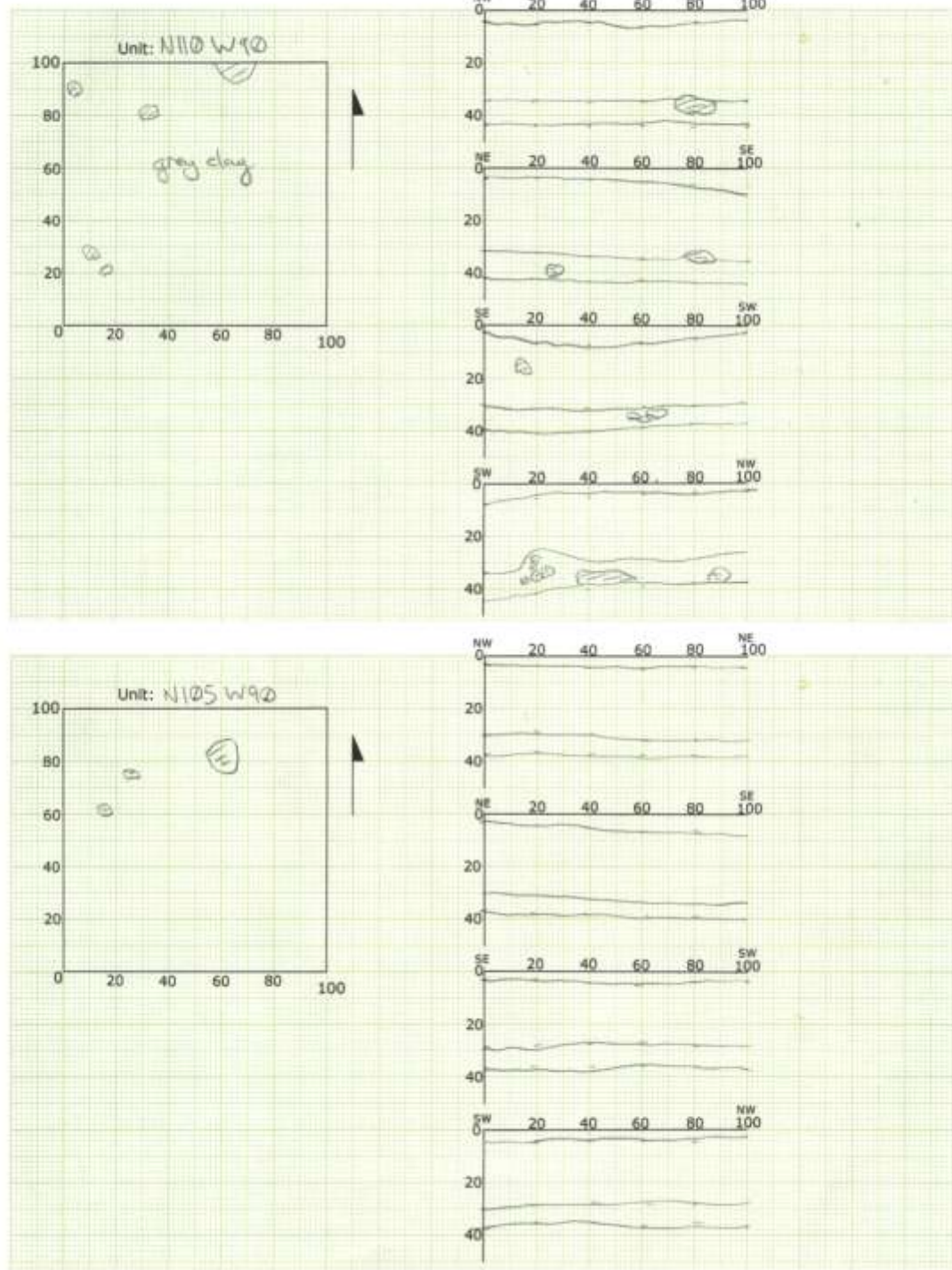


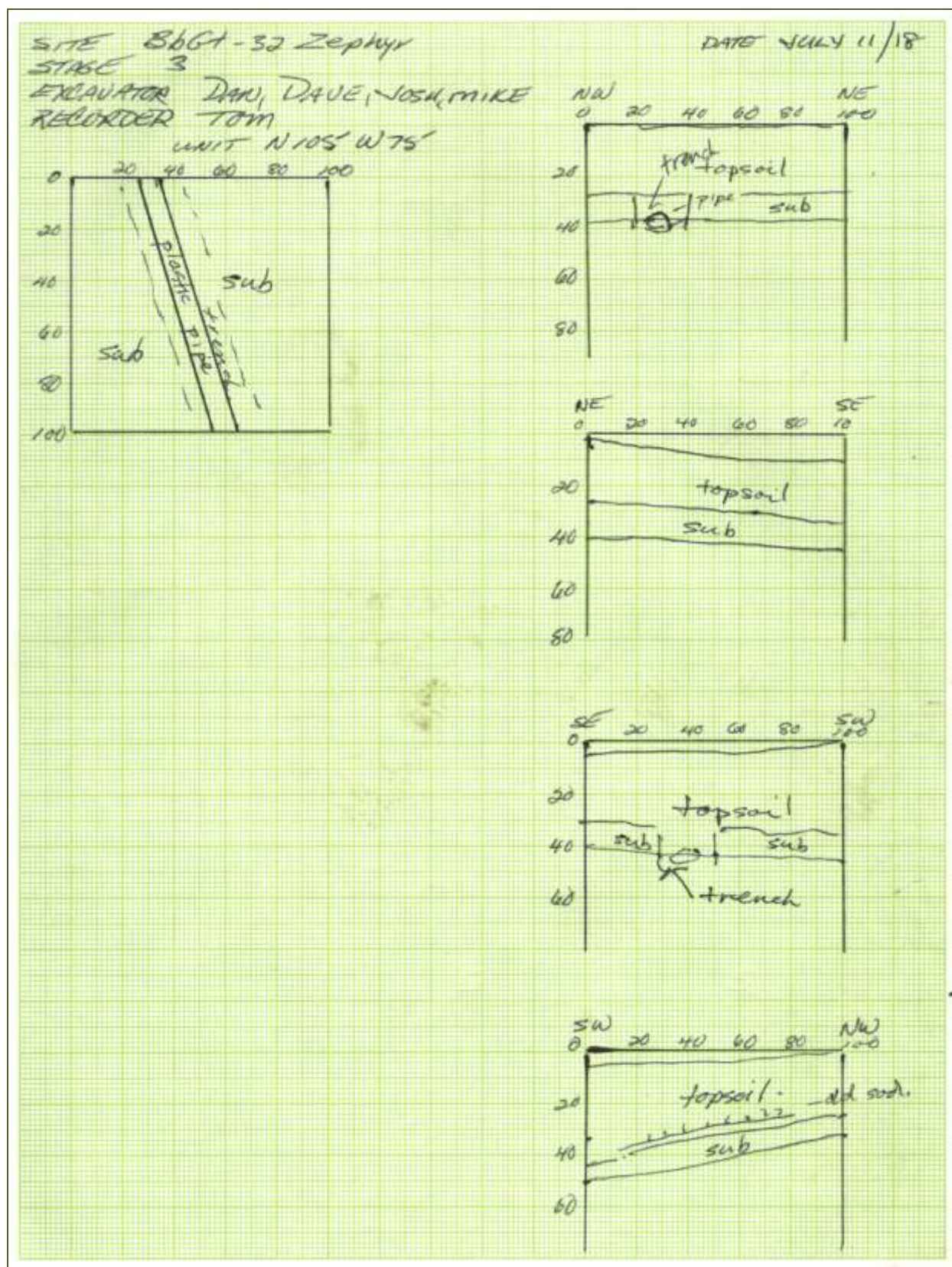
543	3	C	Coarse Red Earthenware	Vessel Body Fragment, Red Paste, Brown exterior Glaze, Brown interior Slip	N135 W85	1	26.13
544	3	G	Aqua Glass	Small bottle base Fragment, Owens Suck and Blow Scar (Meld)	N135 W85	1	27.37
545	1	G	Colourless Glass	Octagonal Vessel Body Fragment	N135 W85	1	3.04
546	3	G	Aqua Glass	Vessel Body Fragment	N135 W85	1	3.6
547	1	G	Dark Olive Glass	Vessel Body Fragment, Pitted	N135 W85	1	4.84
548	1	F	Bone	mammalian long bone Fragment	N135 W85	1	1.52
549	1	F	Bone	Meleagris gallopavo Long bone, cut marks	N135 W85	1	12.75
550	1	M	Iron	Sheet metal casing	N135 W85	1	3.85
551	1	C	Coarse Red Earthenware	Vessel Body Fragment, Red Paste, Brown exterior Glaze, Brown interior Slip	N135 W90	1	5.03
552	1	C	Refined White Earthen Ware	Vessel Body Fragment, Blue Willow	N135 W90	1	1.73
553	1	C	Refined White Earthen Ware	Vessel body Fragment, undecorated	N135 W90	1	0.42
554	1	G	Colourless Glass	Window Glass Fragment	N135 W90	1	2.21
555	1	C	Terracotta	Vessel body Fragment, undecorated	N140 W70	1	4.46
556	1	C	Refined White Earthen Ware	Vessel body Fragment, undecorated	N140 W70	1	1.8
557	1	C	Ironstone	Vessel body Fragment, undecorated, Burnt	N140 W70	1	0.96
558	1	M	Iron	Cut Nail	N140 W70	1	7.65
559	1	C	Refined White Earthen Ware	Vessel Rim Fragment, undecorated	N140 W85	1	2.89
560	1	C	Refined White Earthen Ware	Vessel Body Fragment, undecorated	N140 W85	1	4.2
561	1	G	Colourless Glass	Vessel Body Fragment, Moulded Decoration	N140 W85	1	13.47
562	1	M	Iron	Hinge Pin fragment	N140 W85	1	6.86

Appendix B: Example Floor and Profile Plans for Stage 3 Units

Site: Zephyr BbG+32
Stage: 3
Recorder: JT
Excavator(s): MO, DJ, JT, DL, JB

Date: July 12/18





Michi Saagiig Historical/Background context:

Appendix C: Michi Saagiig Historical/Background Statement

The traditional homelands of the Michi Saagiig (Mississauga Anishinaabeg) encompass a vast area of what is now known as southern Ontario. The Michi Saagiig are known as “the people of the big river mouths” and were also known as the “Salmon People” who occupied and fished the north shore of Lake Ontario where the various tributaries emptied into the lake. Their territories extended north into and beyond the Kawarthas as winter hunting grounds on which they would break off into smaller social groups for the season, hunting and trapping on these lands, then returning to the lakeshore in spring for the summer months. The Michi Saagiig were a highly mobile people, travelling vast distances to procure subsistence for their people. They were also known as the “Peacekeepers” among Indigenous nations. The Michi Saagiig homelands were located directly between two very powerful Confederacies: The Three Fires Confederacy to the north and the Haudenosaunee Confederacy to the south. The Michi Saagiig were the negotiators, the messengers, the diplomats, and they successfully mediated peace throughout this area of Ontario for countless generations. Michi Saagiig oral histories speak to their people being in this area of Ontario for thousands of years. These stories recount the “Old Ones” who spoke an ancient Algonquian dialect. The histories explain that the current Ojibwa phonology is the 5th transformation of this language, demonstrating a linguistic connection that spans back into deep time. The Michi Saagiig of today are the descendants of the ancient peoples who lived in Ontario during the Archaic and Paleo-Indian periods. They are the original inhabitants of southern Ontario, and they are still here today.

The traditional territories of the Michi Saagiig span from Gananoque in the east, all along the north shore of Lake Ontario, west to the north shore of Lake Erie at Long Point. The territory spreads as far north as the tributaries that flow into these lakes, from Bancroft and north of the Haliburton highlands. This also includes all the tributaries that flow from the height of land north of Toronto like the Oak Ridges Moraine, and all of the rivers that flow into Lake Ontario (the Rideau, the Salmon, the Ganaraska, the Moira, the Trent, the Don, the Rouge, the Etobicoke, the Humber, and the Credit, as well as Wilmot and 16 Mile Creeks) through Burlington Bay and the Niagara region including the Welland and Niagara Rivers, and beyond. The western side of the Michi Saagiig Nation was located around the Grand River which was used as a portage route as the Niagara portage was too dangerous. The Michi Saagiig would portage from present-day Burlington to the Grand River and travel south to the open water on Lake Erie. Michi Saagiig oral histories also speak to the occurrence of people coming into their territories sometime between 800-1000 A.D. seeking to establish villages and a corn growing economy – these newcomers included peoples that would later be known as the Huron-Wendat, Neutral, Petun, and Tobacco Nations. The Michi Saagiig made Treaties with these newcomers and granted them permission to stay with the understanding that they were visitors in these lands. Wampum was made to record these contracts, ceremonies would have bound each nation to their respective responsibilities within the political relationship, and these contracts would have been renewed annually (see Gitiga Migizi and Kapyrka 2015). These visitors were extremely successful as their corn economy grew as well as their populations. However, it was understood by all nations involved that this area of

Ontario were the homeland territories of the Michi Saagiig. The Odawa Nation worked with the Michi Saagiig to meet with the Huron-Wendat, the Petun, Neutral, and Tobacco Nations to continue the amicable political and economic relationship that existed – a symbiotic relationship that was mainly policed and enforced by the Odawa people. Problems arose for the Michi Saagiig in the 1600s when the European way of life was introduced into southern Ontario. Also, around the same time, the Haudenosaunee were given firearms by the colonial governments in New York and Albany which ultimately made an expansion possible for them into Michi Saagiig territories. There began skirmishes with the various nations living in Ontario at the time. The Haudenosaunee engaged in fighting with the Huron-Wendat and between that and the onslaught of European diseases, the Iroquoian speaking peoples in Ontario were decimated. The onset of colonial settlement and missionary involvement severely disrupted the original relationships between these Indigenous nations. Disease and warfare had a devastating impact upon the Indigenous peoples of Ontario, especially the large sedentary villages, which mostly included Iroquoian speaking peoples. The Michi Saagiig were largely able to avoid the devastation caused by these processes by retreating to their wintering grounds to the north, essentially waiting for the smoke to clear. Michi Saagiig Elder Gitiga Migizi (2017) recounts:

“We weren’t affected as much as the larger villages because we learned to paddle away for several years until everything settled down. And we came back and tried to bury the bones of the Huron but it was overwhelming, it was all over, there were bones all over – that is our story.

There is a misnomer here, that this area of Ontario is not our traditional territory and that we came in here after the Huron-Wendat left or were defeated, but that is not true. That is a big misconception of our history that needs to be corrected. We are the traditional people, we are the ones that signed treaties with the Crown. We are recognized as the ones who signed these treaties and we are the ones to be dealt with officially in any matters concerning territory in southern Ontario. We had peacemakers go to the Haudenosaunee and live amongst them in order to change their ways. We had also diplomatically dealt with some of the strong chiefs to the north and tried to make peace as much as possible. So we are very important in terms of keeping the balance of relationships in harmony. Some of the old leaders recognized that it became increasingly difficult to keep the peace after the Europeans introduced guns. But we still continued to meet, and we still continued to have some wampum, which doesn’t mean we negated our territory or gave up our territory – we did not do that. We still consider ourselves a sovereign nation despite legal challenges against that. We still view ourselves as a nation and the government must negotiate from that basis.”

Often times, southern Ontario is described as being “vacant” after the dispersal of the Huron-Wendat peoples in 1649 (who fled east to Quebec and south to the United States). This is misleading as these territories remained the homelands of the Michi Saagiig Nation. The Michi Saagiig participated in eighteen treaties from 1781 to 1923 to allow the growing number of European settlers to establish in Ontario. Pressures from increased settlement forced the Michi Saagiig to slowly move into small family groups around the present day communities: Curve Lake First Nation, Hiawatha First Nation, Alderville First Nation, Scugog Island First Nation, New Credit First Nation, and Mississauga First Nation.

The Michi Saagiig have been in Ontario for thousands of years, and they remain here to this day.

****This historical context was prepared by Gitiga Migizi, a respected Elder and Knowledge Keeper of the Michi Saagiig Nation.****

Publication reference:

Gitiga Migizi and Julie Kapyrka

2015 Before, During, and After: Mississauga Presence in the Kawarthas. In *Peterborough Archaeology*, Dirk Verhulst, editor, pp.127-136. Peterborough, Ontario: Peterborough Chapter of the Ontario Archaeological Society.