

SCHEDULE OF LAND USE

Proposed Land Use	Lot / Block	Units	m ²	ac	ha	%
Townhomes	1-56	56	14,549.16	3.60	1.455	15.2
Parkette	58		1,187.81	0.29	0.119	1.2
Apartment Units	59	12	1,462.17	0.36	0.146	1.5
Open Space	57, 60		74,269.95	18.35	7.427	77.6
Road Widening	61, 62		1,605.64	0.40	0.161	1.7
Lanes 'A' and 'B'	Lanes A & B		2,626.86	0.65	0.263	2.7
Total		68	95,701.59	23.65	9.570	100

LEGEND

- SUBJECT LANDS
- LSRCA REGULATION BOUNDARY
- ENVIRONMENTAL CONSTRAINTS
- SETBACKS FROM ENVIRONMENTAL CONSTRAINTS

SITE STATS

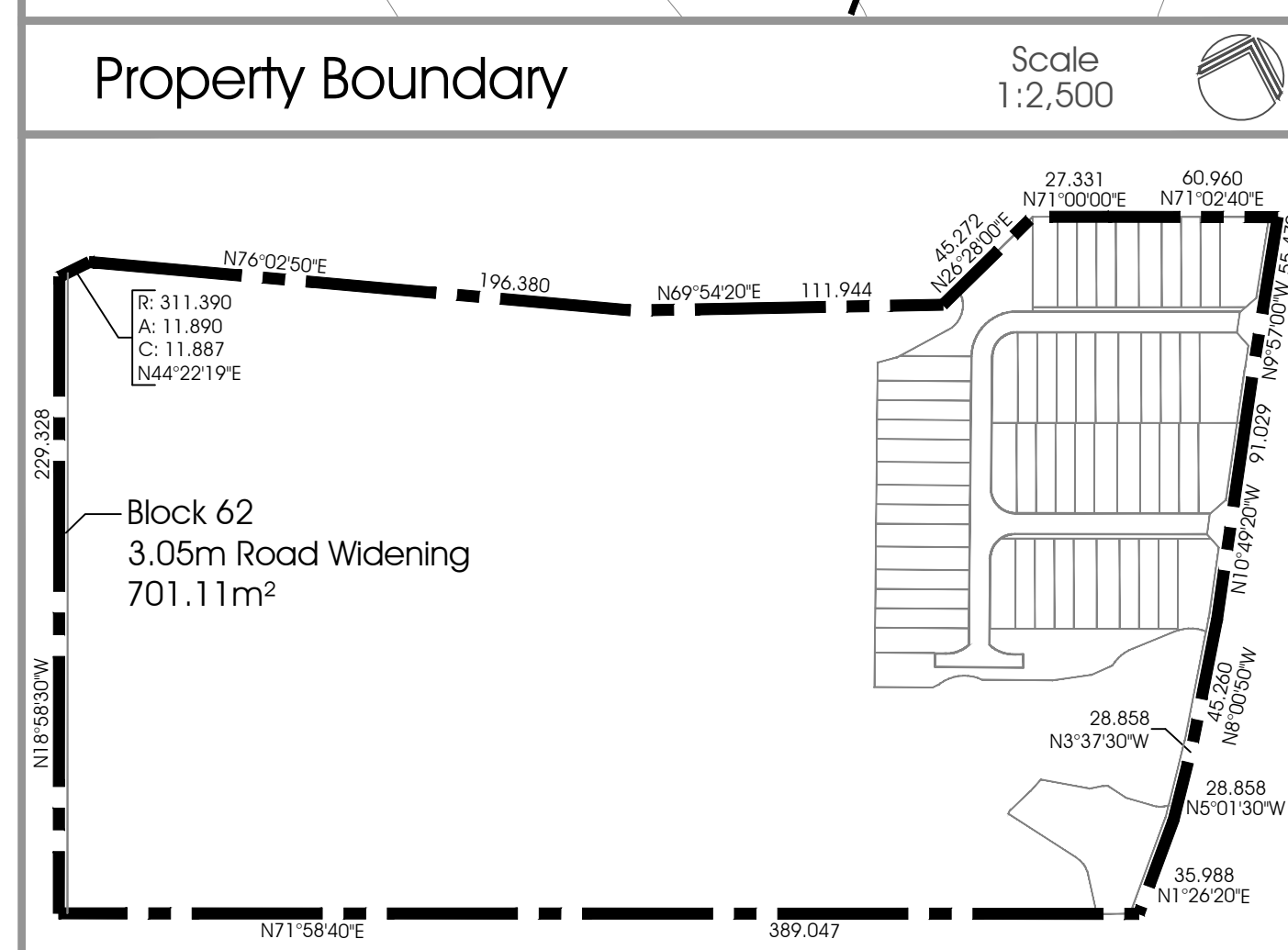
Townhomes (Lots 1-56)	
Total Units	56
Min. Internal Unit Lot Area	227.5m ²
Min. End Unit Lot Area	268.13m ²
Min. Corner Unit Lot Area	362.91m ²
Min. Internal Unit Lot Frontage	7.0m
Min. End Unit Lot Frontage	8.25m
Min. Corner Unit Lot Frontage	10.33m
Min. Front Yard Setback	8.0m
Min. Internal Yard Setback	1.25m
Min. External Yard Setback	3.3m
Min. Rear Yard Setback	10.0m
Max. Lot Coverage	44.6%
Min. Landscaped Open Space	44.8%
Parking	112 Spaces
Apartment Units (Block 59)	
Total Units	12
Lot Area	1,462.17m ²
Lot Frontage	42.82m
Front Yard Setback	19.39m
Interior Side Yard Setback	3.2m
Rear Yard Setback	9.0m
Max. Lot Coverage	16.4%
Landscaped Open Space	49.7%
Height	3 Storeys
Parking	18 Spaces

No.	REVISION	DATE

Note: All dimensions are shown in metres.

Copyright Reserved

The Contractor shall verify and be responsible for all dimensions. DO NOT scale the drawing - any errors or omissions shall be reported to Groundswell without delay. The Copyright to all designs and drawings are the property of Groundswell. Reproduction or use for any purpose other than that authorized by Groundswell is forbidden.



Draft Concept Plan

154 & 164 CEMETERY RD
(PT OF LOTS 26 & 27 CONCESSION 6)
TOWNSHIP OF UXBRIDGE
REGIONAL MUNICIPALITY OF DURHAM

Scale: 1:500

Project No.: 16-18

Drawing No.: 01c

35 WEST BEAVER CREEK ROAD, UNIT 109
BIRCHMOUNT HILL, ONTARIO L8B 3K1
T: 905-977-8254 F: 905-977-9924
groundswellplanning.com

groundswell
URBAN PLANNERS INC.
GIVING YOU SOMETHING TO BUILD ON.

DESIGN	DRAWN	AM
APPROVED	DATE	Nov. 18, 2016

BR, MF