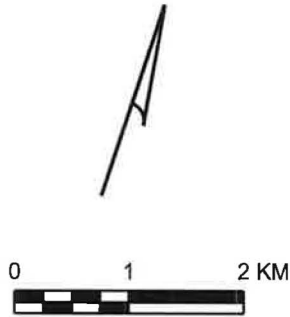


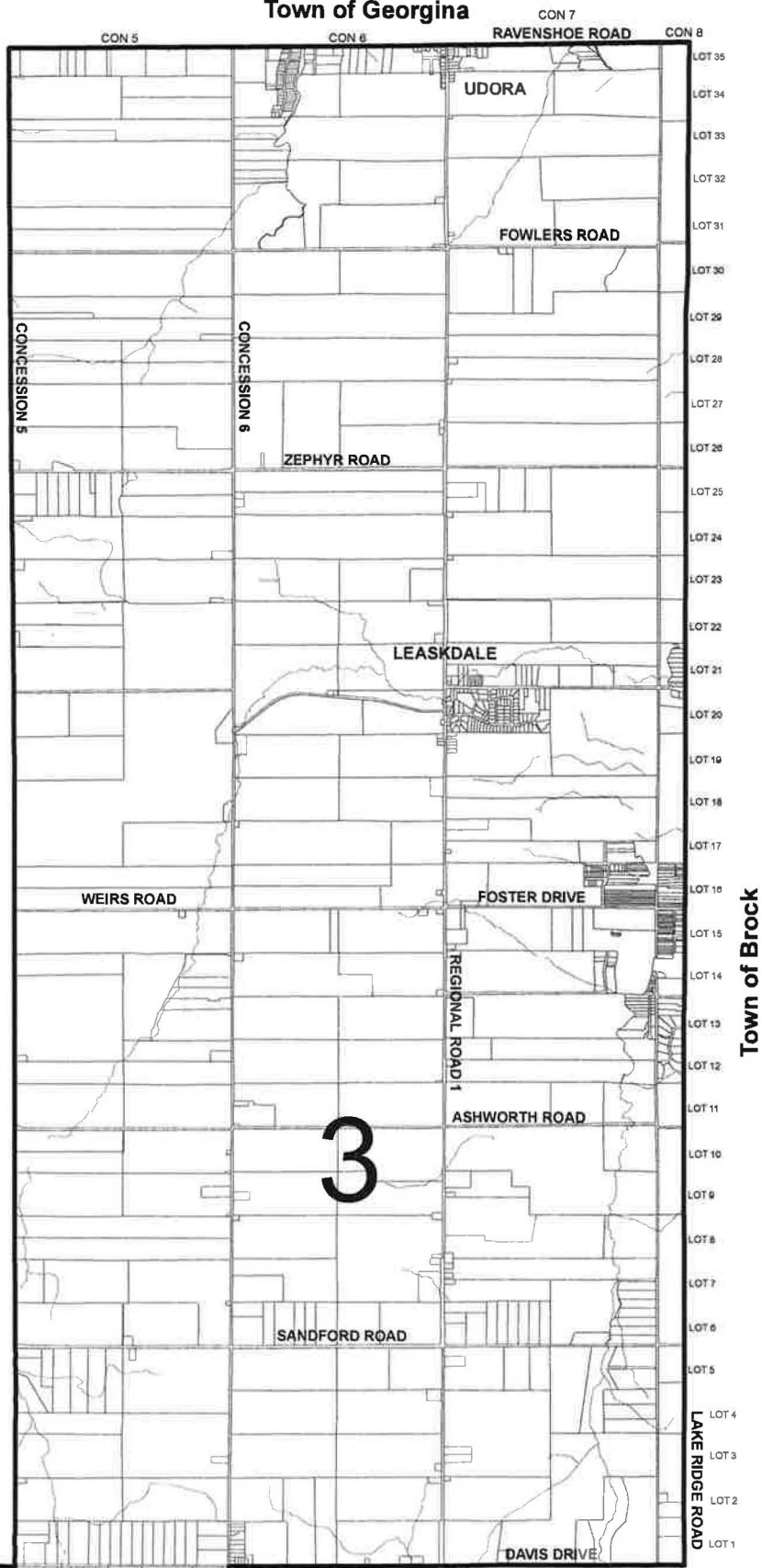


**TOWNSHIP OF  
UXBRIDGE**

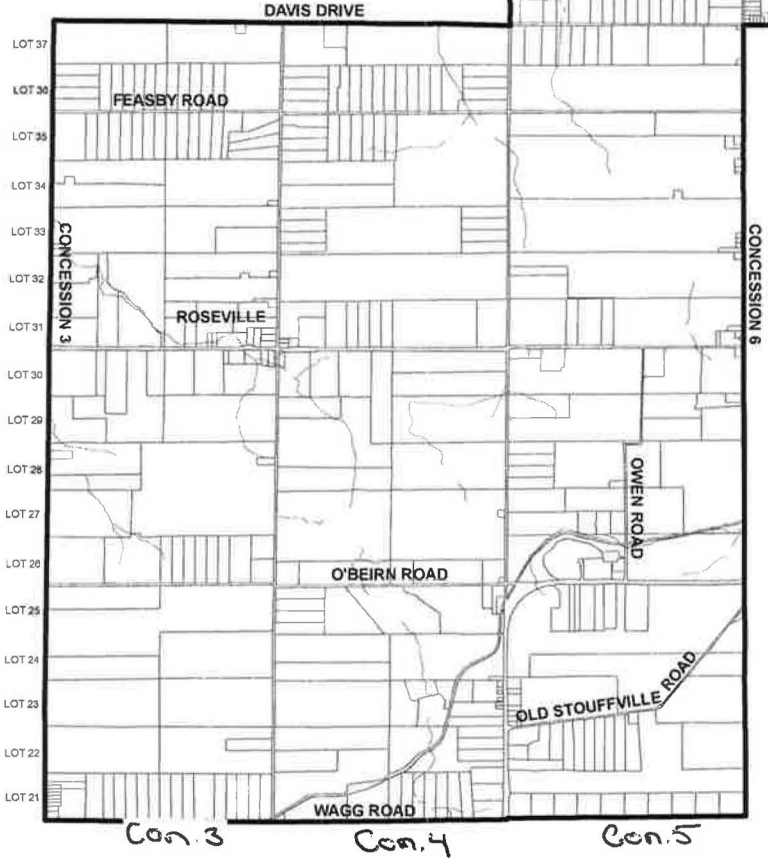
**WARD 3  
Electoral Wards**



**Town of Georgina**



**Town of Brock**



**WARD DESCRIPTION**  
**WARD 3**  
 COMPRISING LOTS 21 TO 37 INCLUSIVE IN CONCESSIONS 3, 4, AND 5 OF THE FORMER TOWNSHIP OF UXBRIDGE AND LOTS 1 TO 35 INCLUSIVE IN CONCESSIONS 5, 6, 7, AND 8 OF THE FORMER TOWNSHIP OF SCOTT.

**Disclaimer**  
 This map has been produced from a variety of sources. The Region of Durham does not make any representations concerning the accuracy, likely results, or reliability of the use of the materials. The Region hereby disclaims all representations and warranties.

**Copyrights**  
 MNR Datasets  
 Produced by Durham Region under License with the Ontario Ministry of Natural Resources, © Queen's Printer for Ontario, 2002, 2005

MPAC Assessment Data, December 2004 to December 2009  
 Assessment Parcels © MPAC and its suppliers. All rights reserved  
 NOT A PLAN OF SURVEY